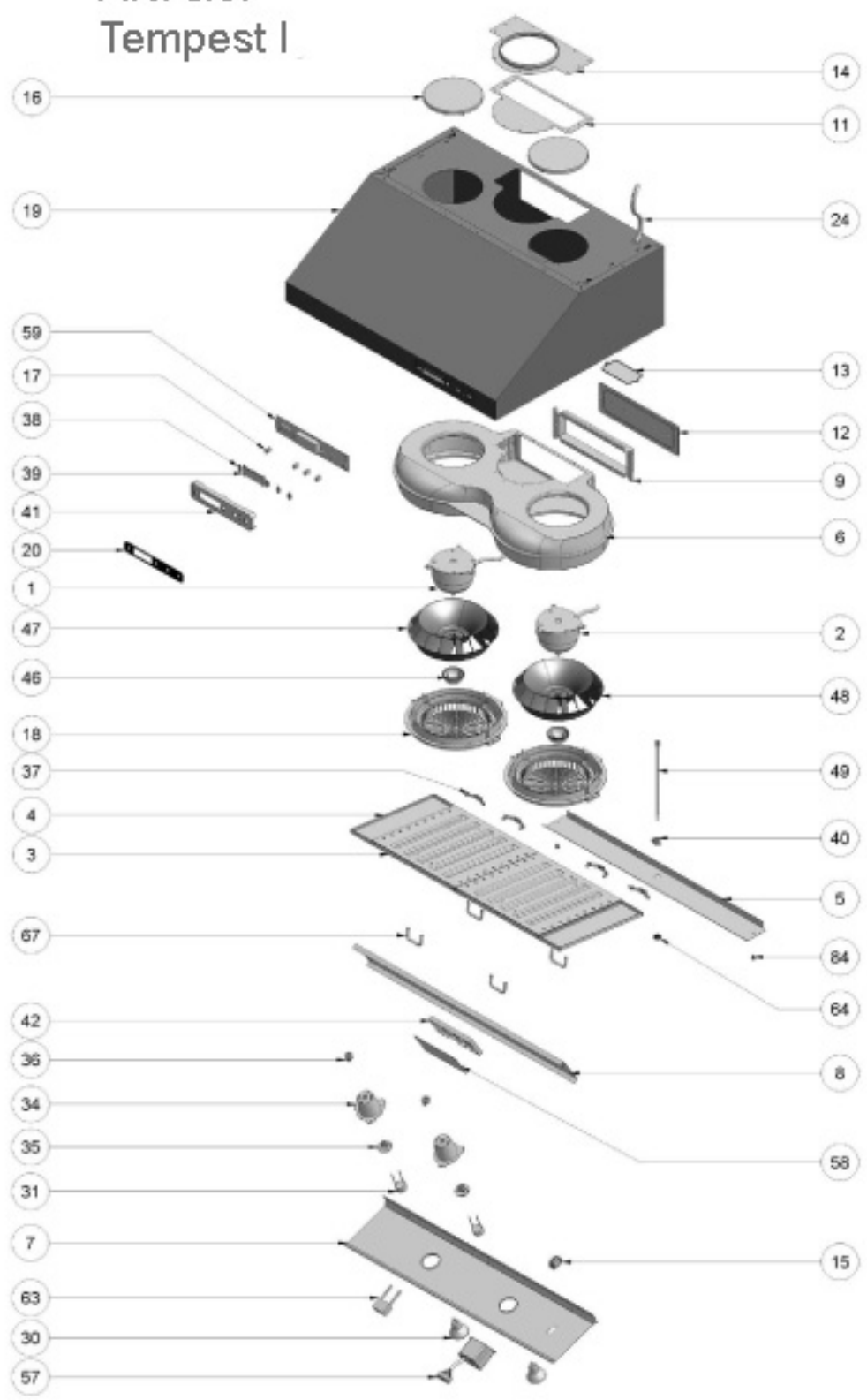


AK70xx Tempest I



ZEPHYR

Tempest I

AK70xx

Ref #	Part #	Description	per Hood
1	12120037	Motor, Left, AK7000, AK7036	1
1	12120038	Motor, Left, AK7042	1
2	12120040	Motor, Right, AK7036, AK7042	1
2	12120041	Motor, Right, AK7000	1
3	50210003	Filter, Baffle (30" x 2)	3
4	50120013	Panel, Side	2
5	50140049	Panel, Lower Back, AK7000	1
5	50140050	Panel, Lower Back, AK7036	1
5	50140051	Panel, Lower Back, AK7042	1
6	56100004	Housing, Motor	1
7	50110007	Panel, Light, AK7000	1
7	50110008	Panel, Light, AK7036	1
7	50110009	Panel, Light, AK7042	1
8	50140041	Panel, Front, AK7000	1
7	50140005	Panel, Front, AK7036	1
7	50140006	Panel, Front, AK7042	1
9	54050009	Collar, Rectangular Starting	1
11	54050033	Transition Adapter, Rectangular	1
12	54050020	Cover Plate, Rectangular	1
13	54200006	Cover Plate, Junction Box	1
14	54050037	Transition Adapter, Round, 6"	1
15	11040011	Switch, Master Power	1
16	50410002	Isolator, Motor	2
17	54140023	Holder, Switch Plate	4
18	56130004	Residue Pan	2
20	52170005	Cover Plate, Switch	1
24	11030016	Power Cord	1
30	Z0B-0015	Bulb, Halogen GU-10 35W	2
31	12100022	Light Socket	2
34	56200013	Housing, Light Socket	2
35	54190002	Plate, Light Socket	2
36	56250002	Insulator, Light Socket	2
37	54140014	Spring, Baffle (New style, two post back)	4
37	54140043	Spring, Baffle (Old style, no post back)	4
38	56210002	Cover Board, LCD	4
39	15000001	LCD Window	1
40	54140024	Temperature Sensor Holder	1
41	56200034	Housing, Switch Board	1
42	56200009	Housing, Control Board	1
46	56140006	Cap, Blower Wheel	2

47	54250013	Blower Wheel, Left	1
48	54250011	Blower Wheel, Right	1
49	11050003	Temperature Sensor	1
57	12110009	Transformer	1
58	11010014	Control Board	1
59	11010023	Switch Board	1
63	12050013	Capacitor	1
64	56250003	Nut, Temperature Sensor	1
67	50280001	Handle, Baffle Filter (30" x 4)	6
84	01020016	Screw, Stainless Steel, 3/16*10	2
	11030034	Cable, Control board to Switch board	1
	05000039	Hardware Packet	1

JUN12.0301