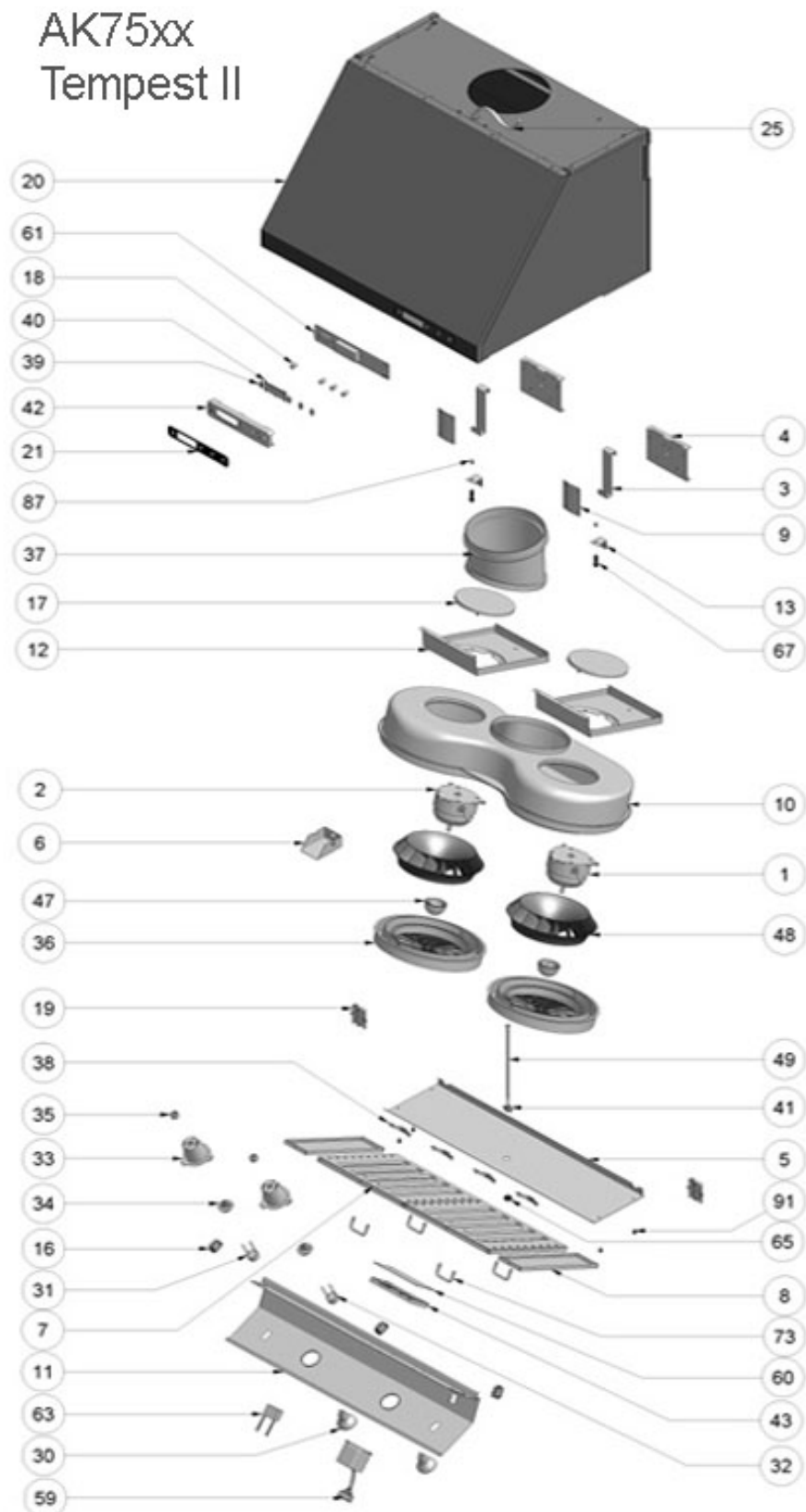


# AK75xx Tempest II



**ZEPHYR**

AK75xx

# Tempest II

Ref #	Part #	Description	per Hood
1	12120036	Motor, Right, AK7500	1
1	12120037	Motor, Right, AK7536	1
1	12120038	Motor, AK7548	2
2	12120037	Motor, Left, AK7500	1
2	12120038	Motor, Left, AK7536	1
3	54140002	Bracket, Internal	2
4	54110017	Bracket, External Mounting	2
5	50140045	Panel, Lower Back, AK7500	1
5	50140046	Panel, Lower Back, AK7536	1
5	50140047	Panel, Lower Back, AK7548	1
6	54200010	Cover Plate, Junction Box, AK7500	1
6	54200006	Cover, Plate, Junction Box, AK7536,AK7548	1
7	50210003	Filter, Baffle (36" x 3, 48" x 4)	2
8	50120013	Panel, Side	2
9	54190003	Plate, Internal Bracket	2
10	56100005	Housing, Motor	1
11	50110015	Panel, Light, AK7500	1
11	50110005	Panel, Light, AK7536	1
11	50110014	Panel, Light, AK7548	1
12	54140020	Holder, Motor	2
13	54140022	Holder, Plate Shaft	2
16	11040011	Switch, Master	3
17	50410002	Isolator, Motor	2
18	54140023	Holder, Switch Plate	4
19	56210011	Cover, Connector	2
21	52170005	Cover, Plate, Switch	1
25	11030016	Power Cord	1
30	Z0B-0015	Bulb, Halogen, GU-10, 35W	1
31	12100022	Light Socket, Long	1
32	12100023	Light Socket, Short	1
33	56200013	Cover, Light Socket	2
34	54190002	Plate, Light Socket	2
36	56130012	Residue Pan	2
37	54050015	Coupler, Round, 8"	1
38	54140014	Spring, Baffle (New style, two post back)	4
38	54140043	Spring, Baffle (Old style, no post back)	4
39	56210002	Cover Board, LCD	4
40	15000001	LCD Window	1

41	54140024	Holder, Temperature Sensor	1
42	56200034	Housing, Circuit Board	1
43	56200009	Housing, Control Board	1
47	56140006	Cap, Blower Wheel	2
48	54250014	Blower Wheel	2
49	11050003	Temperature Sensor	1
59	12110009	Transformer	1
60	11010014	Control Board	1
61	11010023	Switch Board	1
63	12050013	Capacitor	1
65	56250003	Nut, Temperature Sensor	1
67	54140015	Standoff	2
73	50280001	Handle, Baffle Filter (36" x 6, 48" x 8)	4
91	01020016	Screw, SS Carriage x 1/2"	2
	11030034	Cable, Control board to Switch board	1
	05000041	Hardware Packet	1

JUN12.0301