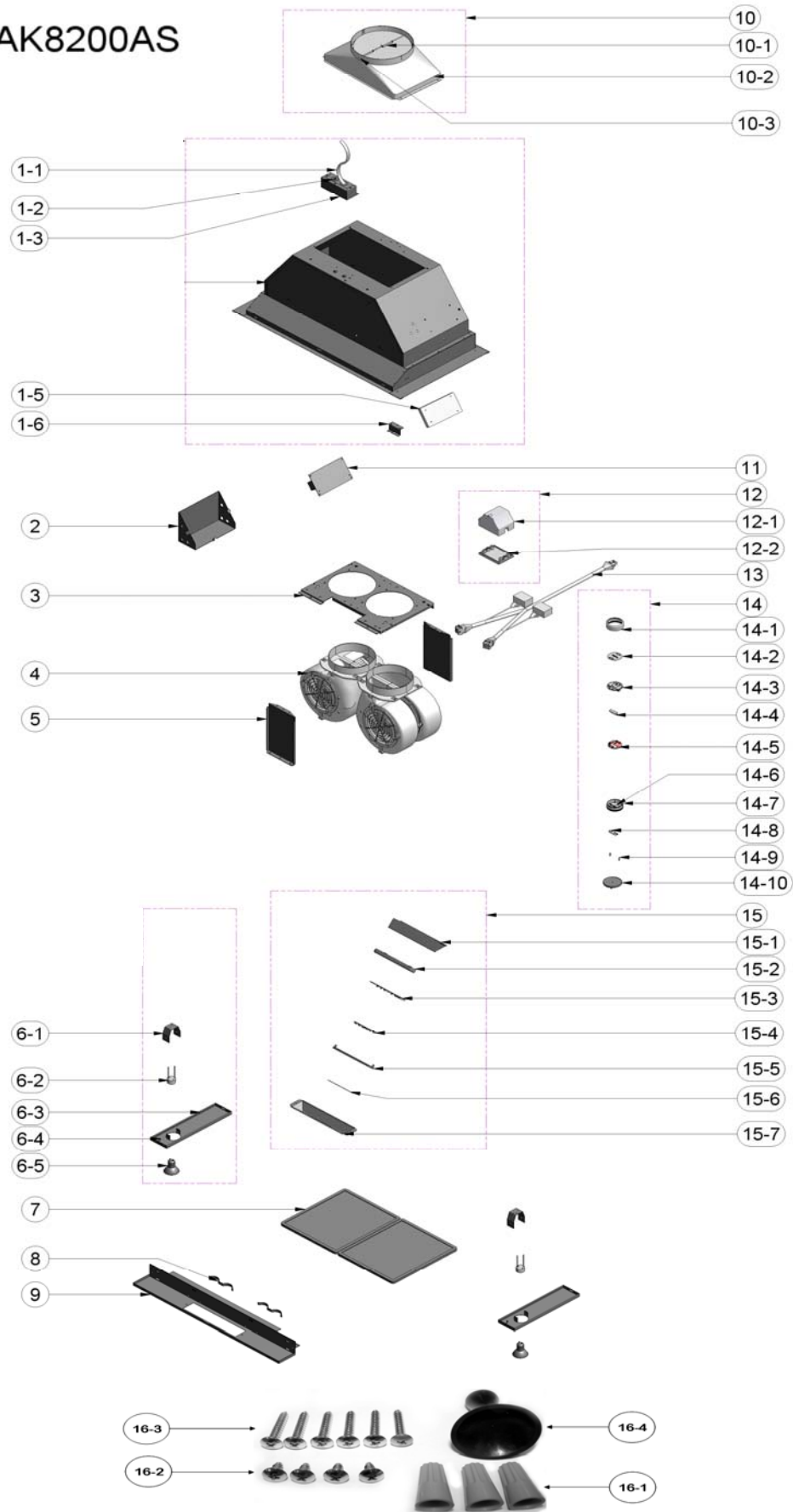


AK8200AS





Tornado II

AK8200AS

Ref #	Part #	Description	Qty.
1-1	11030015	Wires, Electrical	1
1-2	54200013	Electrical Box	1
1-3	54200014	Electrical Box Cover	1
1-5	56200009	Bracket, Control Board	1
1-6	54190010	Plate, Interior	1
2	56200056	Box, Control Board	1
3	54190013	Bracket, Motor	1
4	12120043	Motor (Single)	2
5	54190014	Plate, Motor	2
6-1	54140050	Bracket, Light Socket	2
6-2	12100041	Light Socket	2
6-3	50110058	Panel, Light	2
6-4	54160009	Spring Clip	4
6-5	Z0B-0023	Bulb, Halogen, GU-10, 35W	2
7	50200037	Filter, Decorative Mesh	2
7	50210010	Filter, Baffle	2
8	54140029	Clip, Filter	2
9	50100007	Panel, Switch	1
10	50500016	Assembly, Damper	1
10-1	54060006	Damper 8" Round	1
10-2	54050063	Adaptor, 8" Round	1
10-3	56230001	Trim, Rubber	2
11	11010032	Control Board	1
11-1	12170002	Fuse, 4A, 250V	1
12-1	56200057	Box, Junction	2
12-2	56200058	Cover, Junction Box	2
13	11030036	Cable Harness	1
14	14000005	Remote Control	1

14-1	56210027	Top Cover	1
14-2	52170035	Switch Cover	1
14-3	54110043	Bracket, Button	1
14-4	15000007	Battery	1
14-5	11010033	Board, Remote Control	1
14-6	54220001	Magnet	1
14-7	56210028	Cover, Bottom	1
14-8	56210029	Cover, Battery	1
14-9	01020019	Screw	2
14-10	52180001	Holder, RF Remote	1
15	11000028	Assembly, Switch	1
15-1	56240012	Cover Plate, Switch Interior	1
15-2	52170033	Housing, Switch Board	1
15-3	11010028	Board, Switch	1
15-5	56200050	Cover, Switch Housing	1
15-6	52110011	Membrane	1
15-7	52170036	Switch Cover	1
16	05000054	Hardware Packet	1
16-1	15000002	Cap, Wire	3
16-2	01070010	Screw, M4 x 8mm	4
16-3	01070014	Screw, M4 x 25mm	6
16-4	15000004	Suction Cup	1

JUL11.0501