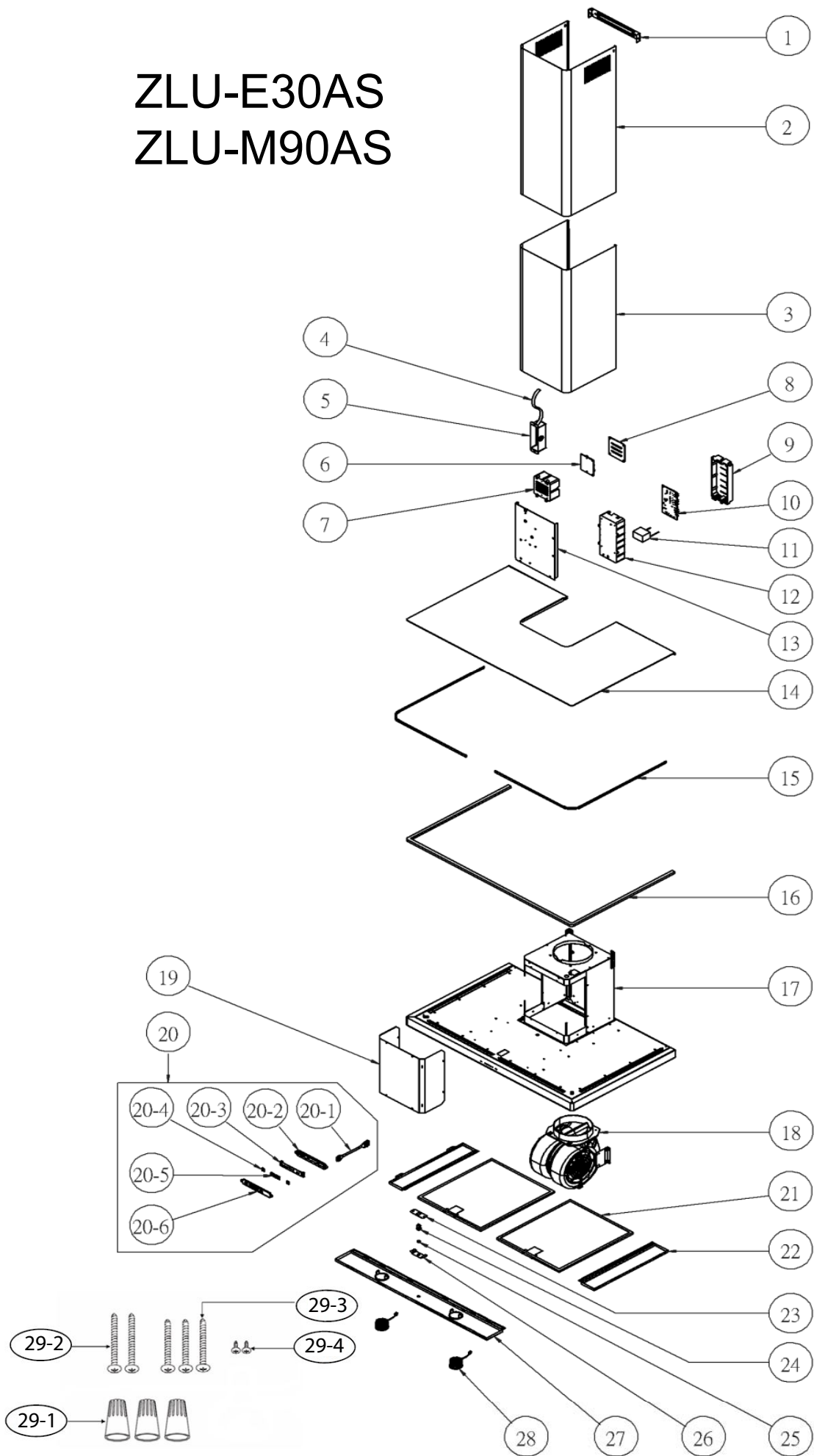


ZLU-E30AS ZLU-M90AS



ZLU-E30AS, ZLU-M90AS

Ref #	Part #	Description	Qty.
1	54110089	Bracket, Duct Cover	1
2	50050147	Duct Cover, Upper	1
3	50050148	Duct Cover, Lower	1
4	11030015	Wires, Electrical	1
5	56200085	Electrical Box	1
6	11010049	Control Board, LED Light	1
7	56200079	Box, LED Control Board	1
8	56210066	Cover, LED Control Board Box	1
9	56210024	Cover, Component Box	1
10	11010061	Control Board	1
11	12050021	Capacitor	1
12	56200051	Box, Component	1
13	54140166	Bracket, Electrical	1
14	50140117	Panel, Top (ZLU-E30AS)	1
14	50140118	Panel, Top (ZLU-M90AS)	1
15	50500143	LED Light Assembly (ZLU-E30AS)	2
15	50500144	LED Light Assembly (ZLU-M90AS)	2
16	50110131	Panel, LED Light (ZLU-E30AS)	1
16	50110132	Panel, LED Light (ZLU-M90AS)	1
17	11030094	Cable, Switch, Long	1
18	12120066	Motor	1
19	56210052	Cover, Motor Housing	1
20	11000085	Switch Assembly	1
20-1	11030080	Cable, Switch, Short	1
20-2	56200082	Housing, Switch	1
20-3	11010063	Switch Board	1
20-4	56240020	Spacer, Switch, Small	2
20-5	56240021	Spacer, Switch, Large	2
20-6	52170060	Cover, Switch	1
21	50200053	Filter, Aluminum Mesh	2
22	50120070	Panel, Side (ZLU-M90AS)	2
23	54190031	Plate, LED Light Switch	1
24	11040025	LED Light Switch	1
25	52170050	Cover, LED Light Switch	1
26	54140114	Bracket, LED Light Switch	1
27	50110133	Panel, Light (ZLU-E30AS)	1
27	50110134	Panel, Light (ZLU-M90AS)	1
28	Z0B-0034	Bloom LED Light Bulb, 6W	2
29	05000075	Hardware Packet	1
29-1	15000002	Wire Nuts	3
29-2	01090002	Screw, M6 x 1 1/2"	3
29-3	01090001	Screw, M6 x 1"	2
29-4	01070006	Screw, M4 x 8mm	2