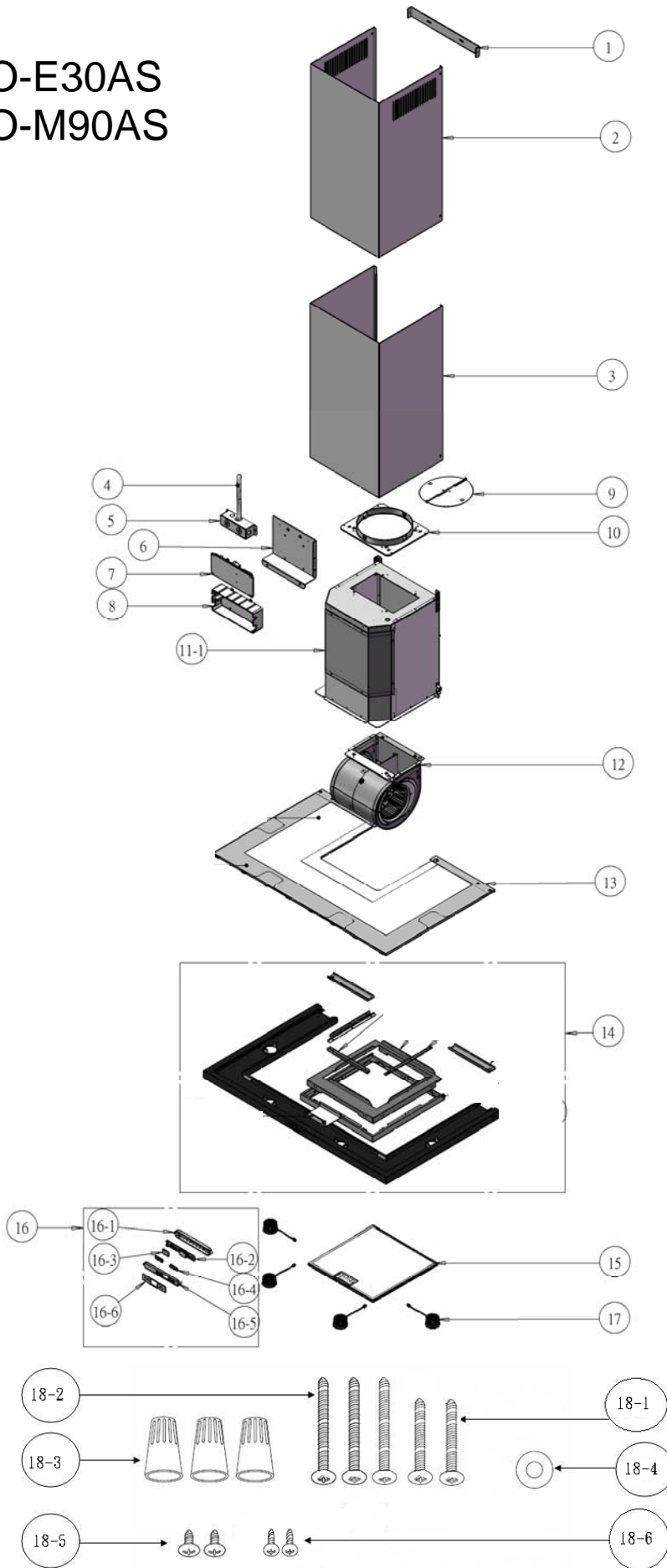


ZMO-E30AS
ZMO-M90AS



ZEPHYR Modena Wall

ZMO-E30AS, ZMO-M90AS

Ref #	Part #	Description	Qty.
1	54110071	Bracket, Duct Cover	1
2	50050111	Duct Cover, Upper	1
3	50050112	Duct Cover, Lower	1
4	11030070	Wires, Electrical	1
5	50500101	Junction Box	1
6	54140097	Bracket, Electrical	1
7	11010043	Control Board	1
8	56200051	Box, Control Board	1
9	54060010	Damper, 8" Round	1
10	54050073	Collar, Motor, 8" Round	1
11-1	54210003	Cover, Motor Housing	1
12	12120064	Motor	1
13	50300090	Canopy, Glass, 30"	1
13	50300091	Canopy, Glass, 36"	1
14	50130103	Assembly, Lower Canopy, 30"	1
14	50130104	Assembly, Lower Canopy, 36"	1
15	50200042	Filter, Aluminum Mesh	1
16	11000068	Switch Assembly	1
16-1	52170042	Housing, Switch	1
16-2	11010044	Switch Board	1
16-3	52170043	Cover, LCD Screen	1
16-4	50400011	Switch Buttons	2
16-5	56210055	Cover, Switch	1
16-6	54140098	Bracket, Switch	1
17	Z0B-0032	Bulb, Bloom LED, 3W	4
18	05000074	Hardware Packet	1
18-1	01090001	Screw, M6 x 1"	2
18-2	01090002	Screw, M6 x 1 1/2"	3
18-3	15000002	Wire Nut	3
18-4	02170001	Washer	1
18-5	01060004	Screw, M3 x 5mm	2
18-6	01650001	Screw, 3/16 x 3/8	2