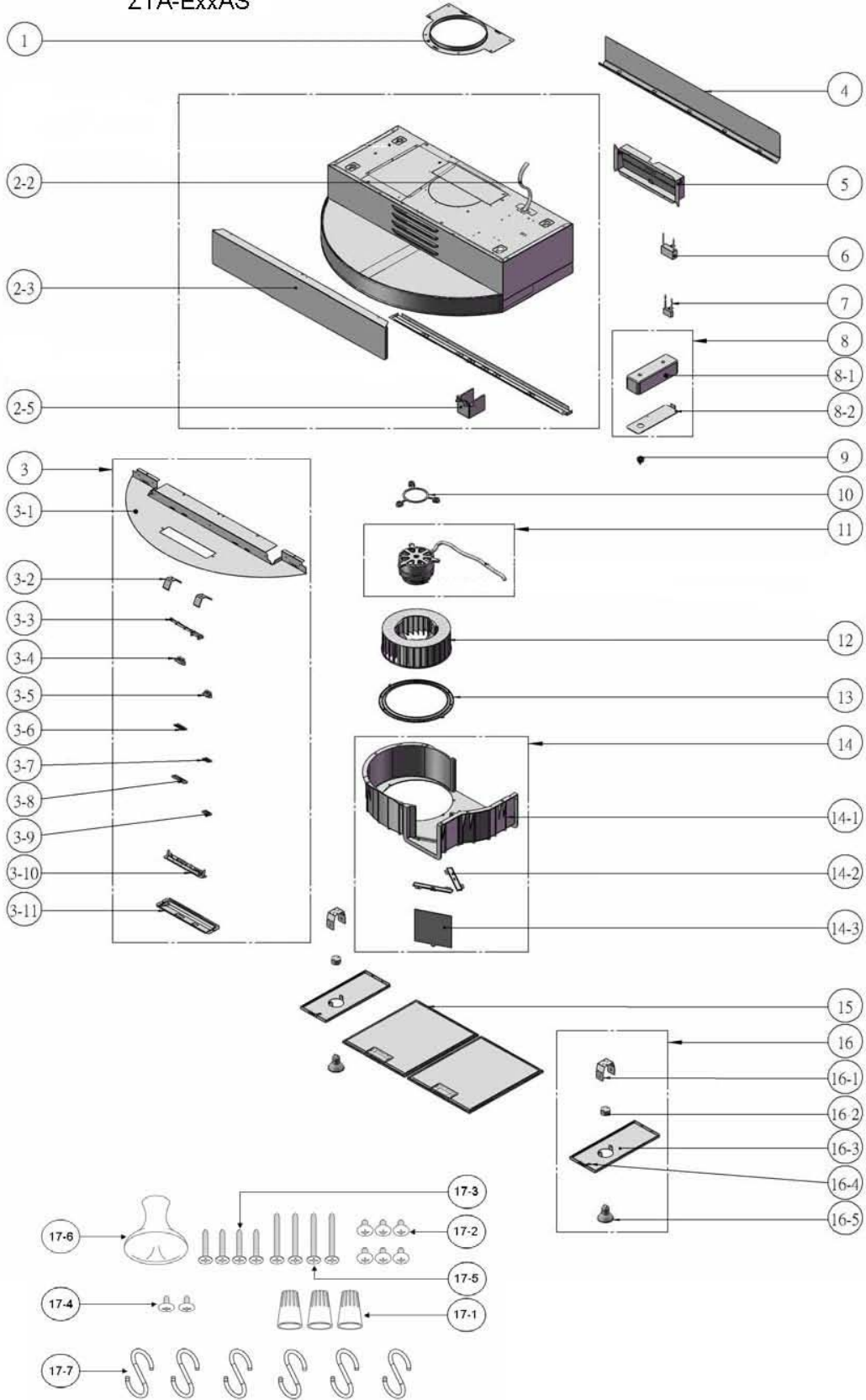


# ZTA-ExxAS



**ZTA-E30AS, ZTA-E36AS**

Ref. #	Part #	Description	Qty.
1	54050065	Collar, 7" Round	1
2-2	11030015	Wires, Electrical	1
2-3	52110016	Cover Panel, Air Diverter (30")	1
2-3	52110017	Cover Panel, Air Diverter (36")	1
2-5	54200011	Box, Electrical	1
3	50500024	Assembly, Bottom Panel (30")	1
3	50500025	Assembly, Bottom Panel (36")	1
3-1	50100011	Panel, Switch (30")	1
3-1	50100012	Panel, Switch (36")	1
3-2	54150011	Spring	2
3-3	56240018	Gasket, Switch	1
3-4	11040009	Switch, Motor	1
3-5	11040010	Switch, Light	1
3-6	56220033	Gasket, Motor Switch	1
3-7	56220034	Gasket, Light Switch	1
3-8	56210057	Cover, Motor Switch	1
3-9	56210058	Cover, Light Switch	1
3-10	54140059	Bracket, Switch	1
3-11	56210038	Cover Plate, Switch	1
4	50320027	Bar, Utensil (30")	1
4	50320028	Bar, Utensil (36")	1
5	54050066	Collar, Rectagular w/Damper	1
6	12050025	Capacitor, 290 CFM	1
6	12050024	Capacitor ( > SN11 )	1
6	12050022	Capacitor ( < = SN11 )	1
7	12050023	Capacitor ( < = SN11 )	1
8	50500026	Assembly, Electrical Box	1
8-1	56200061	Box, Electrical	1
8-2	56210039	Cover, Electrical Box	1
9	11040014	Switch, Master	1
10	54140060	Bracket, Motor	1

11	12120062	Motor, 290 CFM	1
11	12120061	Motor ( > SN11 )	1
11	12120057	Motor ( < = SN11 )	1
12	54250011	Blower Wheel, 290 CFM	1
12	54250022	Blower Wheel ( > SN11 )	1
12	54250021	Blower Wheel ( < = SN11 )	1
13	56210040	Cover, Blower Wheel	1
14	50500027	Assembly, Blower Housing	1
14-1	56100019	Housing, Blower	1
14-2	56210041	Cover, Air Diverter	2
14-3	56090013	Plate, Air Diverter	1
15	50200030	Filter, Aluminum Mesh	2
15-1	01650001	Screw, Charcoal Filter Bracket	8
16	50500028	Assembly, Light Panel (30")	1
16	50500029	Assembly, Light Panel (36")	1
16-1	54140050	Bracket, Light Socket	2
16-2	12100027	Socket, Light	2
16-3	50110062	Panel, Light (30")	2
16-3	50110063	Panel, Light (36")	2
16-4	54160009	Spring Clip	2
16-5	Z0B-0020	Bulb, Halogen GU-10, 50w	2
17	05000057	Hardware Packet	1
17-1	15000002	Wire Cap	3
17-2	01070006	Screw, M4 x 8mm	6
17-3	01070016	Screw, M4 x 3/4"	4
17-4	01070002	Screw, M4 x 8mm Point Head	2
17-5	01070015	Screw, M4 x 1 1/14"	4
17-6	15000004	Suction Cup	1
17-7	50180003	Hook, S (30" x 5)	6

SEP14.0501