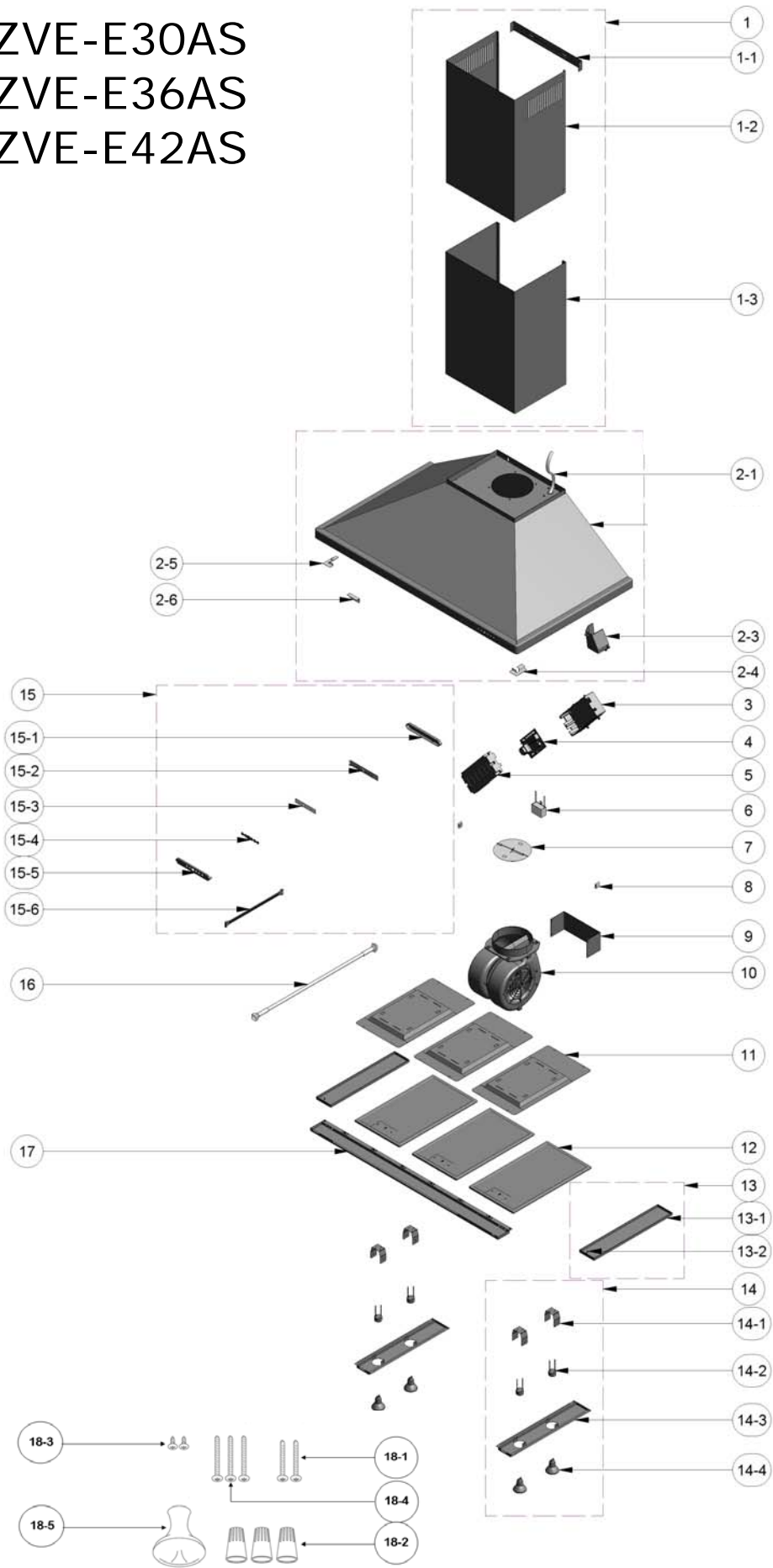


ZVE-E30AS
ZVE-E36AS
ZVE-E42AS





Venezia

ZVE-E30AS, ZVE-E36AS, ZVE-E42AS

Ref #	Part #	Description	Qty.
1	50500017	Assembly, Duct Cover	1
1-1	54110044	Bracket, Duct Cover	1
1-2	50050049	Duct Cover, Upper	1
1-3	50050050	Duct Cover, Lower	1
2-1	11030020	Wires, Electrical	1
2-3	54200012	Electrical Box	1
2-4	54190015	Plate, Interior Right	1
2-5	54190016	Plate, Interior Left	1
2-6	54190017	Plate, Interior Middle	1
3	56200051	Box, Component	1
4	11010034	Control Board	1
4-1	12170004	Fuse, 8A, 250V	1
5	56210024	Cover, Component Box	1
6	12050021	Capacitor	1
7	54060004	Damper	1
8	50180002	Damper Clip	2
9	54140051	Bracket, Motor	1
10	12120043	Motor	1
11	54170015	Bracket, Charcoal Filter (30" x 2)	3
12	50200027	Filter, Metal Mesh (30" x 2)	3
13	50500018	Assembly, Panel (30", 42")	1
13-1	50120034	Panel, Spacer (30", 42")	2
13-2	54160009	Spring Clip (30", 42")	2
14	50500019	Assembly, Light Panel (30" x 1)	2
14-1	54140050	Bracket, Light Socket (30" x 2)	4

14-2	12100041	Socket, Light (30" x 2)	4
14-3	50110059	Panel, Light (30" x 1)	2
14-4	Z0B-0020	Bulb, Halogen GU-10, 50w (30" x 2)	4
15	11000029	Assembly, Switch	1
15-1	52170033	Housing, Switch Board	1
15-2	11010035	Board, Switch	1
15-3	52110015	Membrane	1
15-4	52170037	Plate, Switch Button	1
15-5	56200050	Cover, Switch Housing	1
15-6	11030037	Wiring, Switch	1
16	11030029	Wiring, Motor	1
17	50250021	Panel, Nose (30")	1
17	50250022	Panel, Nose (36")	1
17	50250023	Panel, Nose (42")	1
18	05000055	Hardware Packet	1
18-1	01090001	Screw, M6 x 1"	2
18-2	15000002	Wire Cap	3
18-3	01070006	Screw, M4 x 8mm	2
18-4	01070015	Screw, M4 x 1 1/4"	3
18-5	15000004	Suction Cup	1

DEC10.0201