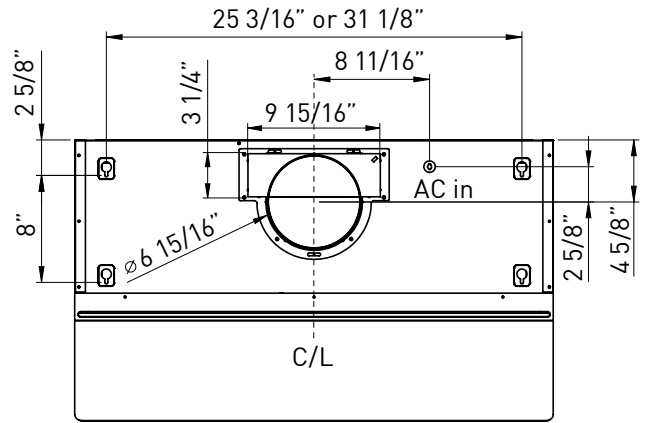


A discreet, European-style, professional-looking range hood, Gust adds fashion to under-cabinet installations. With its mechanical controls neatly tucked away below the canopy, Gust provides the subtlety its owners re-

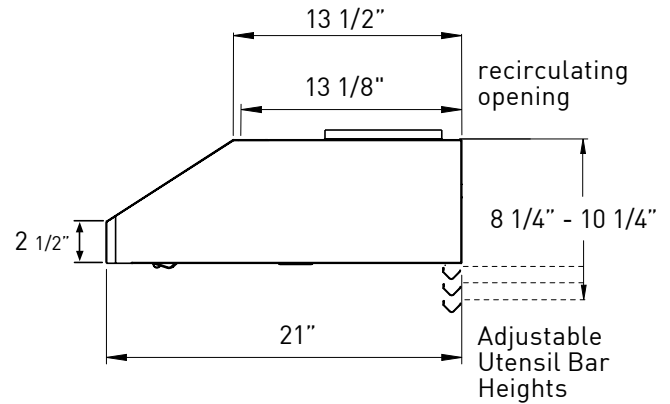
quire. Its perfectly curved corners and understated top-mounted return-air louver offer further evidence that Gust spares nothing when it comes to quality construction. Available with optional recirculating kit and baffle filters.



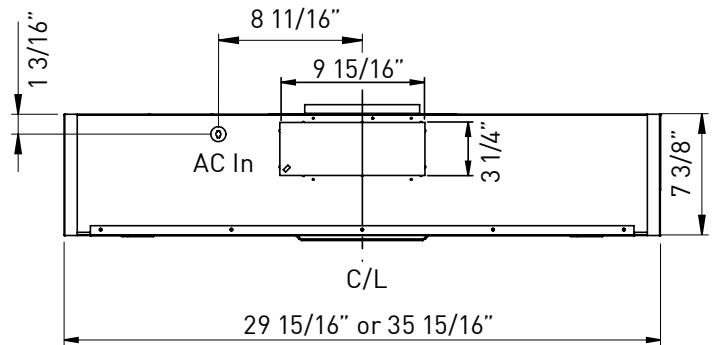
Shown with optional Baffle Filters



TOP



SIDE



BACK

**MODEL**

Stainless Steel	AK7100AS	AK7136AS
Stainless Steel, w/ Baffle Filters	AK7100AS-BF	AK7136AS-BF
Stainless Steel, 290 CFM	AK7100AS290	AK7136AS290

<b>Size</b>	30"	36"
<b>Blower CFM (Min. - Max.)</b>	210 - 400	210 - 400
<b>Sones (Min. - Max.)</b>	2 - 5	2 - 5
<b>290 CFM (Min. - Max.)</b>	120 - 290	120 - 290
<b>290 Sones (Min. - Max.)</b>	1.1 - 3.2	1.1 - 3.2

**FEATURES**

<b>Controls</b>	Mechanical Slide	Mechanical Slide
<b>Speed Levels</b>	3	3
<b>Auto Delay-Off</b>	No	No
<b>Lighting</b>	Halogen, 50W x2	Halogen, 50W x2
<b>Dual-Level Lighting</b>	Yes	Yes
<b>Filters</b>	Aluminum Mesh x2 Baffle x2 (AK7100AS-BF)	Aluminum Mesh x2 Baffle x2 (AK7136AS-BF)
<b>Recirculating Option</b>	Yes	Yes

**DUCT SPECIFICATIONS**

<b>Vertical Internal Blower</b>	7" Round or 3-1/4" x 10"	7" Round or 3-1/4" x 10"
<b>Horizontal Internal Blower</b>	3-1/4" x 10"	3-1/4" x 10"
<b>400 CFM AC POWER</b>	120V, 60Hz at Max. 1.7A	120V, 60Hz at Max. 1.7A
<b>290 CFM AC POWER</b>	120V, 60Hz at Max. 1.55A	120V, 60Hz at Max. 1.55A

**OPTIONAL ACCESSORIES**

<b>Recirculating Kit</b>	ZRC-0200	ZRC-0200
<b>Bloom™ GU10 LED</b>	ZOB0040	ZOB0040
<b>Make-Up Air Kit</b>	MUA006A	MUA006A
<b>Damper, 7" Round</b>	AK00067	AK00067

<b>MOUNTING HEIGHT RANGE*</b>	24" - 32"	24" - 32"
-------------------------------	-----------	-----------

<b>WARRANTY</b>	3 years parts, 1 year labor	3 years parts, 1 year labor
-----------------	-----------------------------	-----------------------------

\*Mounting height refers to distance between top of a 36" tall cooking surface and bottom of hood.