

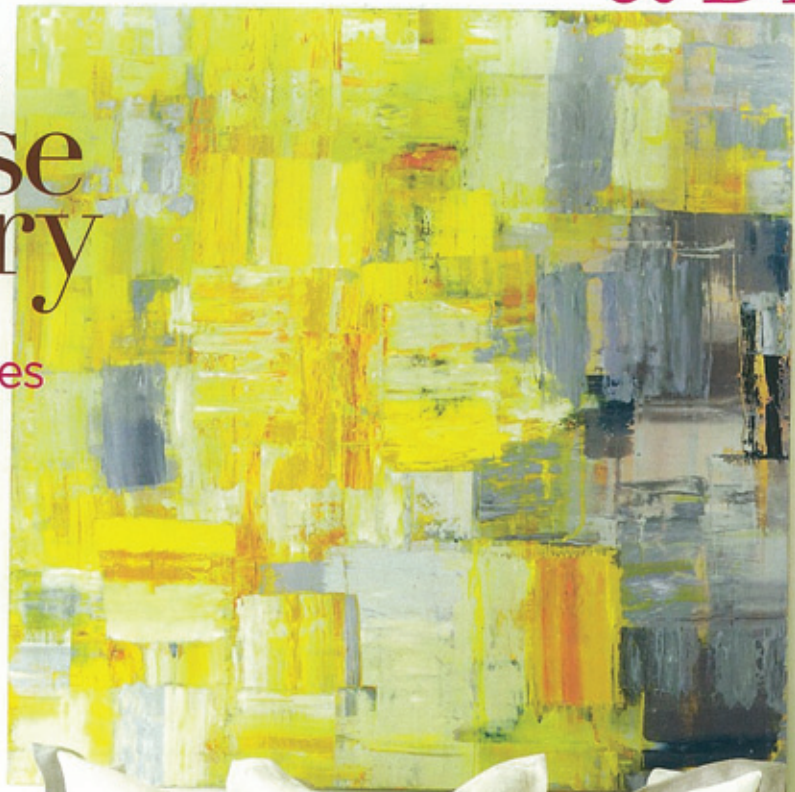
WESTERN Interiors & DESIGN

Small House Luxury

Smart Design
for Small Spaces

Santa Fe
Los Angeles
Washington
Hawaii
San Francisco
Montana

*Big Ideas,
Small Kitchen*



AUGUST/SEPTEMBER 2008

SAN FRANCISCO

2,700 SQUARE FEET



Pure patina

The Mayan Crown hood is made by Handcrafted Metal from 100 percent copper. Each hood is patinated and comes complete with filters, lights and blowers. Prices available upon request.



Asian fusion

From the Troy Adams FusionDesign² collection, TansuChill includes Sub-Zero's integrated refrigeration; \$22,949.



Touching experience

The 30-inch Electrolux dual-fuel built-in range with Wave Touch has controls for time and temperature; \$2,749.



Luxury cabinetry

Christopher Peacock's Refectory collection shown in quartersawn white oak; starting at \$80,000.



Fantastic four

Brizo's Belo faucet offers a pull-out wand with spray, steam, volume-control and pause functions; starting at \$595.



Farmhouse flair

The lustrous bronze Farmhouse sink by Sun Valley Bronze is hand-cast; \$9,957, plus shipping.

Kitchen News!

The latest innovations in form and function lend beauty and ease to the hub of the house



Not so square

Snaidero's Kube kitchen model, designed by Giovanni Offredi, offers a streamlined look with contemporary forms. Prices available upon request.



Bright lights

GE's new 48-inch Monogram Professional range uses LED lighting and holds up to three professional-size baking sheets; \$10,649 (shown).



Dynamic duo Rohl's new Country Kitchen single-lever faucet with side spray has a metal lever and 9-inch spout; Tuscan brass, \$899.

Hood horizons

Designed by Robert Brunner, the Arc Collection by Zephyr includes Horizon, a wall-mounted glass hood that comes in various colors and can be etched to create a unique effect; starting at \$2,999.

Slim style

Jenn-Air's 72-inch bronze side-by-side refrigerator offers Precision Temperature Management and electronic controls with LED display; \$2,949.



Auto pilot Wolf's 36-inch unframed induction cooktop incorporates technology that automatically turns off a cooking zone after thirty seconds if a compatible cooktop pot is not detected; \$1,791.