

# ZEPHYR



**VENTILATION COLLECTIONS**



HELLO



## **THIS IS ZEPHYR**

A company driven by the idea that everything in the home is an opportunity for personal expression. Since 1997, we have set the industry standard by combining sleek design elements with high-powered performance. Enhance your love of cooking, and increase your enjoyment of it by choosing a range hood ideal for your style and budget.

Partnering with some of the most renowned designers, we've crafted collections that are not only design driven but also feature the very latest in innovative & efficient technology.

## **REASONS WE STAND OUT**

### **Quiet Performance**

Our range hoods aren't just powerful. They're powerfully quiet, serving up great ventilation free of noise so you can enjoy entertaining family and friends nearby.

### **Superior Craftsmanship**

With an unrelenting eye for detail, we deliver exceptional quality, fit and finish you can see, feel and appreciate.

### **Performance Versatility**

Our products offer a wide range of power and innovation starting with our Zephyr Connect Technology, universal make-up air dampers, exclusive Airflow Control Technology™ (ACT™) and CFM levels ranging from 250 up to 1,300.

### **Zephyr Warranty**

We back our products with an unparalleled level of service and a generous multi-year warranty.

## TECHNOLOGY AND INNOVATION

Zephyr continues to lead the industry with innovations such as our Zephyr Connect Technology, PowerWave™ blower, Airflow Control Technology™ and LED lighting including LumiLight and BriteStrip™. Our product team has developed cutting edge features that include Proximity Touch and ICON Touch® Controls, Quick-Lock Installation and Self-Cleaning Systems—resulting in the most advanced range hood technology available today.

## PRODUCT TECHNOLOGIES

### **Zephyr Connect App**

Zephyr Connect range hoods are compatible with the Zephyr Connect App, which allows you to control your range hood remotely from anywhere using a Wi-Fi network and internet. Change the fan speed, set the delay-off, turn lights on/off, and more. Zephyr Connect provides detailed product information and will send users helpful notifications such as clean filter reminders or whether or not the hood was turned off after use. The Zephyr Connect App seamlessly interacts with your smart devices such as Amazon Alexa or Google Home smart speakers for voice activation. Available to download on mobile devices from Google Play or the Apple App Store.

### **PowerWave Blower™**

Designed to deliver best-in-class performance with unparalleled quiet operation, Zephyr PowerWave represents a breakthrough in kitchen technology. The first range hood blower with three-phase AC power, PowerWave has unique aerodynamic blades to help move up to 750 CFM of air while minimizing noise and improving efficiency. PowerWave is also versatile by allowing you to combine two blowers together to achieve 1,300 CFM, making it the most powerful dual-internal blower on the market.

### **Airflow Control Technology™**

ACT™ or Airflow Control Technology, is a proprietary feature that limits blower CFM to ensure your home is safe and in compliance with local make-up air codes.







+  
**ZEPHYR** ZEPHYR  
CONNECT

## INTRODUCING ZEPHYR CONNECT

At Zephyr, we're transforming the kitchen through design, discovery and customer care. The Zephyr Connect App is our latest technology, bringing elevated functionality to the kitchen, supporting customers with enhanced service, and touchscreen convenience for our state-of-the-art products. Connect to what matters.

### Control Your Hood From Anywhere

Control compatible range hoods remotely from anywhere, changing fan speed, lighting and more. The app seamlessly connects with smart devices such as Amazon Alexa or Google Home smart speakers for voice activation.

### Receive Notifications and Reminders

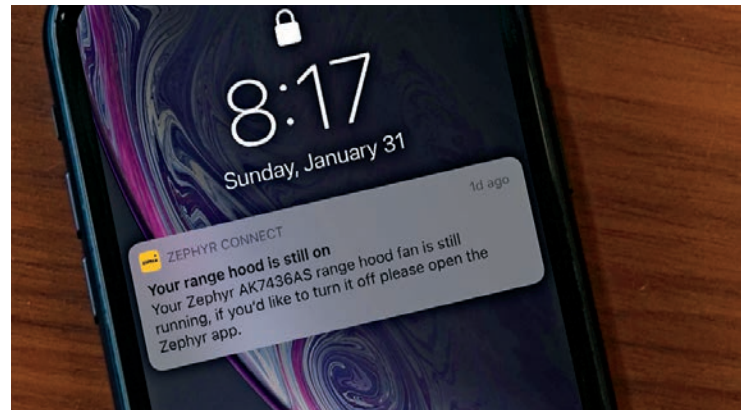
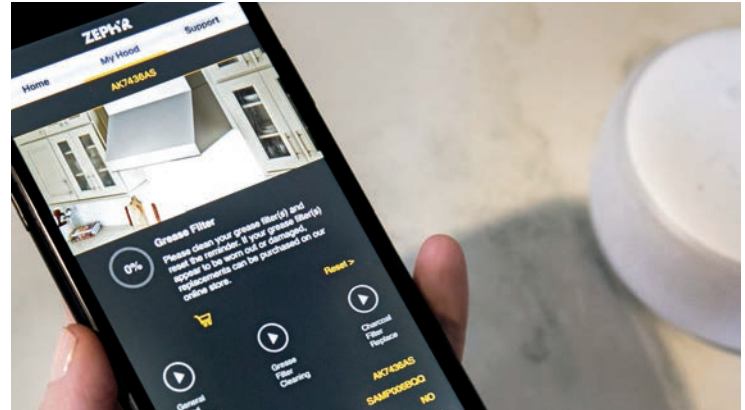
Convenience is amplified further with detailed product information, reminders for cleaning or filter purchase/replacement, or simply to turn a hood off after use.

### Customer Support Resources

The app provides quick access to warranty information as well as a library of how-to videos.

### Available on Select Models

Download the Zephyr Connect App today.



## THE COLLECTIONS

We think you'll find our Designer, Core, and Pro Collections offer the ultimate combination: performance-driven technology and peerless design.



### DESIGNER

---

Timeless luxury design



### CORE

---

Accessible design & innovation





## PRO

---

Power & performance

## DESIGNER COLLECTION

At Zephyr, great design is never an afterthought or a luxury – it's a way of life. Along with our designer partnerships, we've created a visionary collection that fuses groundbreaking engineering with contemporary lines and an expression of artistry with powerful performance.

- 3-Speed Controls
- Bloom™ HD LED Light Bulbs
- Industry-First Tri-Level LED Light Strip
- ADA Compliant Wireless Remote Control (Standard or Optional)
- CleanAir Feature, turns hood on once every 4 hours for 10 minutes\*
- Multiple Blower Options\*\*

\*on select models

\*\*sold separately

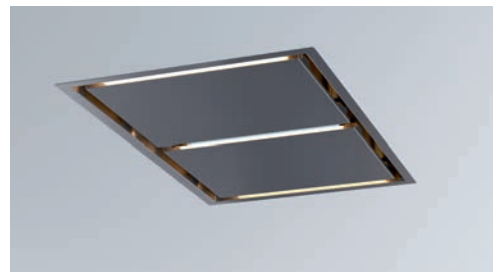
## ISLAND



### LAYERS ISLAND (ALL)

This bold take on the classic island range hood is a streamlined fusion of white glass and stainless steel that lends new meaning to “leading edge”. Available with tri-level LED light strips.

Size: 36”, 42” CFM: 1,000, 600, 290



### LUX ISLAND (ALU)

Enjoy unobstructed views of your kitchen with the modern, minimalist lines of the Lux. This sleek hood includes a wireless remote control, and it discreetly mounts into the ceiling above your range or cooktop. Equipped with tri-level LED light strips and Perimeter Aspiration. Available in white or stainless steel.

Size: 43”, 63” CFM: 1,100, 1,000, 600, 290



### TRAPEZE ISLAND (CTP)

With its directional Bloom™ HD LED lighting and a graceful, slow-curve canopy, the Trapeze is more than a focal point – it's a bold statement.

Size: 48”, 54”, 60” CFM: 1,000, 600, 290

## WALL



### DUO WALL (ADU)

An ideal duo of materials, Duo can be paired with a wood overlay using our template as the guide. Or, if you prefer the simplicity of a slim profile stainless steel canopy, keep it as-is; for the stylish, and contemporary kitchen. Available with a tri-level LED light strip.

Size: 36" CFM: 1,000, 600, 290



### LAYERS WALL (ALA)

A streamlined fusion of black or white glass and stainless steel with a light, floating effect are sandwiched together in a reimagining of the classic range hood. Available with a tri-level LED light strip.

Size: 36", 42" CFM: 1,000, 600, 290



### OKEANITO WALL (COK)

A sleek combination of whimsy and discipline, the Okeanito boasts perforated side panels that radiate gentle ambient light, infusing it's surroundings with a sense of grace and calm.

Size: 36", 42", 48" CFM: 1,000, 600, 290



### WAVE WALL (AWA)

Ingenious dual capture zones ensure a smoke and debris-free kitchen. Offering a glowing tri-level LED light strip.

Size: 90cm CFM: 1,000, 600, 290

## DOWNDRAFT



### LIFT DOWNDRAFT (DLI)

The Lift Downdraft is everything you want in a luxury ventilation system – power, performance, and good looks. Featuring dual-level BriteStrip™ LED lighting, Tri-Capture Zones and 4-Way Ducting, the Lift is ready to help you rise to any occasion with the touch of a button.

Size: 30", 36" CFM: 1,000, 600

## CORE COLLECTION

Classics never go out of style. Much more than just functional products, each product in the Core Collection can serve as the ultimate foundation of a great kitchen.

- Superior quality fit and finish
- Innovative technology
- Quiet operation
- Accommodates the widest range of ceiling heights in the industry
- Easy installation
- Optional recirculating kit for most models
- Optional duct cover extension for all chimney models
- Quick-Lock installation for island models

## ISLAND



### ANZIO ISLAND (ZAZ)

Anzio's 600-CFM blower, ICON Touch® controls, dual-level BriteStrip™ LED lighting and Quick-Lock installation system put it a step ahead of the competition. Available with ACT™ technology.

Size: 36", 42" CFM: 600, 390, 290



### LUCÉ ISLAND (ZLC)

Boasting an elegant slice of sleek stainless steel married with the subtle glamor of accent lighting in Cloud White, Deep Blue, and Amber, Lucé is the (gorgeous) future of range hoods. Available with ACT™ technology and our Quick-Lock installation system with magnetic duct covers.

Size: 36", 42" CFM: 600, 390, 290



### MILANO ISLAND (ZML)

Milano Island now boasts a 700-CFM PowerWave™ blower and Zephyr Connect technology — making it a more powerful and energy efficient range hood. Featuring tri-level LumiLight LED lighting, ACT™ and the Quick-Lock Installation System. Available with glass and stainless steel canopy options and an optional wireless remote control.

Size: 36", 42" CFM: 700, 590, 390, 290

**Compatible with Zephyr Connect App**



### MODENA ISLAND (ZMD)

Resembling a floating canopy made of steel and glass, Modena houses dual-level LumiLight LED lighting and 5-speed ICON Touch® controls within its one-inch stainless steel canopy. Includes the exclusive Quick-Lock Installation System and ACT™.

Size: 36", 42" CFM: 600, 390, 290



## ISLAND



### NAPOLI ISLAND (ZNA)

Strong and sophisticated with upwardly-angled walls, Napoli makes an impression. Enhanced with a 700-CFM PowerWave™ blower, Zephyr Connect technology, and tri-level LumiLight LED lighting. Available with the Quick-Lock installation system and baffle filters.

Size: 36", 42" CFM: 700, 590, 390, 290

**Compatible with Zephyr Connect App**



### RAVENNA ISLAND (ZRE)

The Ravenna's delicate curve of a smoke-gray glass canopy and our sleek black stainless steel finish with an anti-smudge Titanium coating for extra durability and easy cleaning add an elegance to your kitchen. Complete with ACT™ technology, ICON Touch® controls and BriteStrip™ LED lighting.

Size: 36", 42" CFM: 600, 390, 290



### ROMA ISLAND (ZRM)

Updated with a new low-profile 3" canopy the Roma is ideal for the design-savvy chef or builder who refuses to settle for mediocrity. Available with BriteStrip™ LED lighting and ACT™ technology.

Size: 36", 42" CFM: 600, 390, 290



### SIENA PRO ISLAND (ZSL)

With it's classic, professional-style design Siena Pro Island is equipped with a 1,200-CFM blower, hybrid baffle filters and Zephyr's ICON Touch® controls. Available with ACT™ technology.

Size: 42", 48" CFM: 1,200, 590, 390



### VERONA ISLAND (ZVN)

The Verona's straight-glass canopy also serves as an ambience setting LED display that rotates between Cloud White, Deep Blue, and Amber color options. Includes the exclusive Quick-Lock Installation System, dual-level LumiLight LED lighting, 5-speed ICON Touch® controls and ACT™.

Size: 36", 42" CFM: 600, 390, 290



## WALL



### ANZIO WALL (ZAN)

A low-profile, chimney-style range hood that will add style and value to any kitchen. Complete with a 600-CFM blower, ICON Touch® controls and our exclusive ACT™ technology. Available in stainless steel and black stainless.

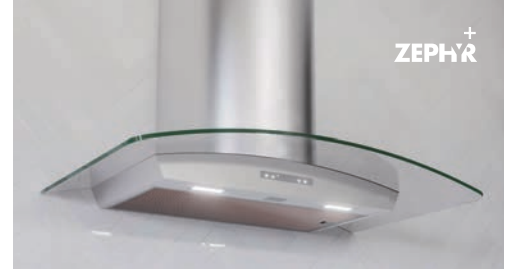
Size: 24", 30", 36" CFM: 600, 390, 290



### LUCÉ WALL (ZLU)

Boasting an elegant slice of sleek stainless steel married with the subtle glamor of accent lighting in Cloud White, Deep Blue, and Amber, the Lucé is the (gorgeous) future of range hoods. Available with ACT™ technology.

Size: 30", 36" CFM: 600, 390, 290



### MILANO WALL (ZMI)

Milano takes range hood design and performance to higher grounds with its Zephyr Connect compatibility and 700-CFM PowerWave™ blower. Featuring tri-level LumiLight LED lighting, proximity touch controls and available in clear glass and stainless steel canopies.

Size: 36" CFM: 700, 590, 390, 290

**Compatible with Zephyr Connect App**



### MODENA WALL (ZMO)

Resembling a floating canopy made of steel and glass, Modena houses dual-level LumiLight LED lighting and 5-speed ICON Touch® controls within its one-inch stainless steel canopy. Available with ACT™.

Size: 30", 36" CFM: 600, 390, 290

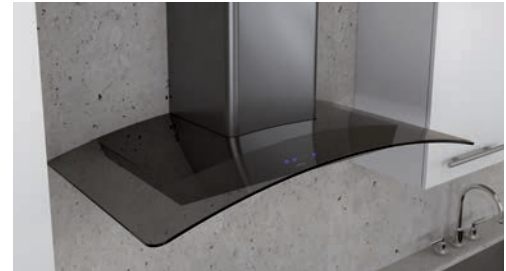


### OMBRA WALL (ZOM)

Ombra is the perfect combination of form and function with its LumiLight LED lighting, capacitive touch controls and optional hybrid baffle filters. Ombra features a powerful 600 CFM blower with our exclusive Airflow Control Technology™ to meet local code requirements.

Available in black stainless steel and stainless steel.

Size: 30", 36" CFM: 600, 390, 290



### RAVENNA WALL (ZRV)

21st Century marries timeless beauty in this stunning hood, which features Clear and Smoke-Gray Glass canopy options, ACT™ and ICON Touch® controls. Available in stainless steel and black stainless.

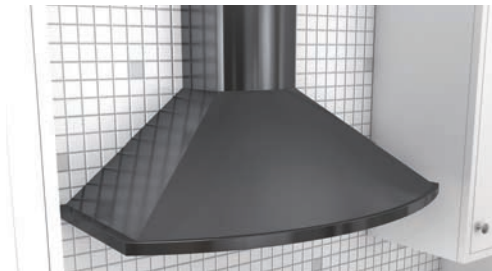
Size: 30", 36" CFM: 600, 390, 290

## WALL



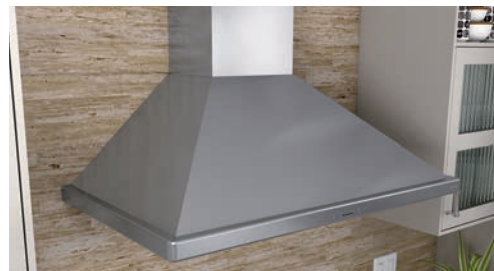
### ROMA WALL (ZRO)

This contemporary design is complemented with a 600-CFM blower that operates at an ultra-quiet single sone. The ICON Touch® controls and 5-speed levels offer added performance. Available with ACT™ technology. Size: 30", 36" CFM: 600, 390, 290



### SAVONA WALL (ZSA)

A semi-circular surface accentuates this range hood's European design. Featuring our new BriteStrip™ LED lighting, a robust 685-CFM blower, 5-speed ICON Touch® controls, and our exclusive ACT™ technology. Available in black, white, stainless steel and black stainless. Size: 30", 36" CFM: 685, 390, 290



### SIENA WALL (ZSI)

Packed with power, a 650-CFM blower, ACT™ technology and hybrid baffle filters make this hood perfect for any kitchen. Dual-level BriteStrip™ LED lighting and ICON Touch® controls make clearing the air as simple as the touch of a button. Size: 30", 36" CFM: 650, 390, 290



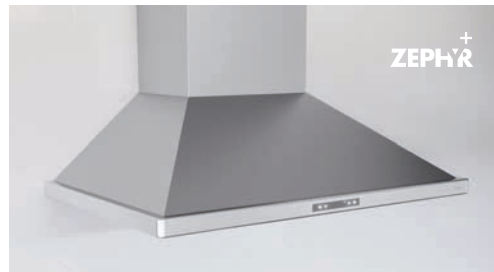
### ROMA GROOVE WALL (ZRG)

Tune into the new: the Roma Groove range hood is here to help you find your rhythm in the kitchen. Its built-in Bluetooth® stereo speakers make it easy to stream your favorite playlist whether you're entertaining or just hanging out with the family. And the beat goes on. Size: 30", 36" CFM: 600, 390, 290



### SIENA PRO WALL (ZSP)

With it's classic, professional-style design Siena Pro is equipped with a 1,200-CFM blower, hybrid baffle filters and Zephyr's ICON Touch® controls. Clean, efficient power is just a touch away. Available with ACT™ technology. Size: 36", 42", 48" CFM: 1,200, 590, 390



### VENEZIA WALL (ZVE)

A classic modern design, Venezia's pyramid shape includes baffle filters, a 700-CFM PowerWave™ blower, and Zephyr Connect technology — elevating this timeless range hood to unparalleled levels of performance. Enhanced with tri-level, LumiLight LED lighting and an optional wireless remote control. Size: 30", 36", 42" CFM: 700, 590, 390, 290  
**Compatible with Zephyr Connect App**





#### SIENA ES WALL (ZSI-ES)

The Siena ES, certified ENERGY STAR hood is packed with power. With a 400-CFM blower and ACT™ technology it has a versatile range of features that'll shine in any kitchen. Warm-white fluorescent lights and Zephyr's new ICON Touch® controls make clearing the air as simple as touching a button. Size: 30", 36" CFM: 400, 290



#### VERONA WALL (ZVO)

The Verona's straight-glass canopy also serves as an ambient setting LED display that rotates between Cloud White, Deep Blue, and Amber color options. Includes dual-level LumiLight LED lighting, 5-speed ICON Touch® controls and ACT™. Size: 30", 36" CFM: 600, 390, 290

## UNDER-CABINET



#### BREEZE I UNDER-CABINET (AK11)

Its sophisticated features and performance set the industry standard for value. 3-speed mechanical controls and 250-CFM blower quietly clears the air while convenient dishwasher-safe aluminum filters remove airborne residues. Updated with dual-level LumiLight LED lighting. Available in black, white and stainless steel finishes. Size: 24", 30", 36" CFM: 250



#### BREEZE II UNDER-CABINET (AK12)

For superior value in a quiet, high-performance package, Breeze II comes equipped with 3-speed electronic controls, 400-CFM blower, and BriteStrip™ LED lighting. Available in black, white, stainless steel and black stainless finishes. Size: 30", 36" CFM: 400



#### PYRAMID UNDER-CABINET (ZPY)

Classic, architectural lines meet at an apex to energize the classic look of the chimney-style under-cabinet hood. Pyramid also boasts an adjustable utensil bar to keep utensils within easy reach. Size: 30", 36" CFM: 400, 290



#### GUST UNDER-CABINET (AK71)

A discreet, European-style, professional-looking range hood, Gust adds fashion and function to under-cabinet installations. Equipped with dual-level LumiLight LED lighting and baffle filters. Size: 30", 36" CFM: 400, 290

## UNDER-CABINET



### GENOVA UNDER-CABINET (ZGE)

With a retractable Smoke-Gray Glass visor that controls the hood's blower and lights, the Genova's crescent-like body delivers stunning design and quality performance. Available with an optional wireless remote.

Size: 30", 36" CFM: 500, 290



### PISA UNDER-CABINET (ZPI)

Tucked neatly beneath your bridge cabinet, Pisa works quietly and beautifully out of sight. Adorned with a retractable visor, LumiLight LED lighting and powered by a 500-CFM or 290-CFM blower, Pisa's low-profile body delivers stunning design and quality performance. Available with a stainless steel or white handle.

Size: 24", 30", 36" CFM: 500, 290



### CYCLONE UNDER-CABINET (AK65)

Modern, clean lines provide a perfect complement to any interior, while centrifugal blowers liquefy cooking residue without complex filters to make clean up a snap. Featuring LumiLight LED lighting, and available in black, white, stainless steel and black stainless finishes.

Size: 30", 36", 42" CFM: 600



### HURRICANE UNDER-CABINET (AK25)

High tech meets high style with an updated look and feel. 3-speed electronic touch controls take charge of the 695-CFM blowers and dual-level LumiLight LED lights. Available in black, white, and stainless steel finishes and with Airflow Control Technology (ACT™).

Size: 30", 36" CFM: 695, 390, 290



### TYPHOON UNDER-CABINET (AK21)

One of our founding models, Typhoon is not only good looking but packed with powerful, virtually noise-free 850-CFM blowers. It includes a convenient self-cleaning system along with tri-level LumiLight LED lights. Available in black, white and stainless steel. Now with Quiet Speed Setting and ACT™.

Size: 30", 36", 42", 48" CFM: 850, 390, 290

## INSERTS



### MONSOON CONNECT ONE-PIECE LINER (AK94)

This powerful, easy to clean hood insert features Zephyr Connect, our most advanced operation system, a PowerWave™ blower, tri-level LumiLight LED lighting, professional baffle filters and a wireless remote control option. Size: 30", 36", 42", 48" CFM: 1,300, 700, 590, 390, 290  
**Compatible with Zephyr Connect App**



### MONSOON I ONE-PIECE LINER (AK92)

A 19-1/4" depth one-piece liner that includes dual-level LumiLight LED's and an ADA compliant wireless remote control, pro baffle filters, multiple CFM options and 6-speed electronic controls. Available with ACT™. Size: 30", 36" CFM: 600, 390, 290  
Size: 42", 48" CFM: 1,200, 590, 390



### MONSOON MINI ONE-PIECE LINER (AK91)

Good things come in small packages, and in this case, it's the Monsoon Mini one-piece liner. Includes dual-level LumiLight LED lighting, 3-speed mechanical slide controls and hybrid baffle filters. It's 300-CFM blower can accommodate both vertical and horizontal ducting. Size: 30", 36" CFM: 300



### TORNADO I POWER PACK (AK81)

This 600-CFM power pack features dual-level halogen lighting, 3-speed blower, an updated hybrid baffle filter and an angled housing for a better fit with any built-in canopy. An adjustable depth, stainless steel liner is also available. Size: 27" CFM: 600



### TORNADO MINI POWER PACK (AK84)

Designed with cost-efficiency and versatility in mind, Tornado Mini's small footprint fits under a standard bridge cabinet — choose one of our optional adjustable-depth stainless steel liners to accommodate custom hood enclosures. Features dual-level LumiLight LED lights, an ultra-quiet blower, and a recirculating option. Size: 20" CFM: 400, 290



### TWISTER POWER PACK (AK80)

The 3-speed Twister with halogen lighting hides the ventilation you need beneath your custom, built-in canopy. An optional liner extends and beautifies the hood and protects your cabinetry. Size: 27" CFM: 400

## INSERTS



### TWISTER ES POWER PACK (AK80-ES)

The 3-speed 290-CFM Twister ES hides the ventilation you need beneath your custom, built-in canopy. An optional stainless steel liner extends the hood and protects your cabinetry. ENERGY STAR approved with warm white fluorescent lighting.

Size: 27" CFM: 290



### VORTEX ONE-PIECE LINER (AK90)

Say hello to the industry's only one-piece liner with adjustable-depth installation. Vortex extends up to 3-inches towards the front of the custom hood canopy so you can install it in spaces up to 20-1/2" deep.

Size: 30", 36" CFM: 390

## DOWNDRAFT



### SORRENTO DOWNDRAFT (DD1)

Ideal for small kitchens or island settings where ceilings are too high for ducting, Sorrento rises to the occasion as a downdraft hood option.

Size: 30", 36" CFM: 500





## PRO COLLECTION

Power, Performance, Size—the sleek, powerful, muscular products in the Pro Collection go above and beyond simple ventilation technology. The hoods in the Pro Collection have been developed for the most discerning of tastes when nothing but the best, the biggest and the most impressive will do.

- Superior quality fit and finish
- Innovative technology
- Quiet operation
- Accommodates the widest range of ceiling heights in the industry
- Easy installation
- ADA Compliant Wireless Remote Control (Standard or Optional)
- Optional duct cover extension for all chimney models

## ISLAND



TITAN ISLAND (AK77)

Featuring PowerWave™ blower technology, Titan island challenges the definition of pro-style hoods with its impressive size, powerful 750-CFM blower – with the option to achieve 1,300 CFM – and stunning good looks. Featuring LED lighting, pro baffle filters, and Airflow Control Technology (ACT™).

Size: 36", 42", 48" CFM: 1,300, 750, 590, 390, 290

## WALL



ROMA PRO WALL (ZRP)

Roma Pro redefines the meaning of pro-style hood with its remarkable size, powerful 750-CFM blower, and contemporary shape. Featuring PowerWave™ blower technology with the option to achieve 1,300 CFM, LED lighting, pro baffle filters, and Airflow Control Technology (ACT™).

Size: 36", 48" CFM: 1,300, 750, 590, 390, 290



TITAN WALL (AK76)

Featuring PowerWave™ blower technology, Titan includes a 750-CFM blower with the option to combine two blowers together to achieve 1,300 CFM. The ultimate workhorse in the kitchen, Titan features LED lighting, pro baffle filters, and ACT™ technology.

Size: 36", 42", 48", 54", 60" CFM: 1,300, 750, 590, 390, 290



#### TEMPEST II WALL (AK75)

Designed with professional-grade performance and seamless contours, Tempest II gives you serious cooking power with 650-CFM or 1,200-CFM blower options. Equipped with dishwasher-safe, high-airflow pro baffle filters, 6-speeds, dual-level LumiLight LED lighting, and an optional wireless remote control.

Size: 30", 36", 42", 48", 54" CFM: 1,200, 650, 390, 290



#### TIDAL II WALL (AK74)

Designed for the ultimate pro-style kitchen, Tidal II wall hood features optional dual 1300-CFM PowerWave™ blowers, Zephyr Connect capabilities, and professional baffle filters. Equipped with tri-level LumiLight LED lighting and 6-Speed Proximity Touch Controls.

Size: 30", 36", 48" CFM: 1,300, 700, 590, 390, 290

**Compatible with Zephyr Connect App**

## UNDER-CABINET



#### TEMPEST I UNDER-CABINET (AK70)

A streamlined under-cabinet pro-style range hood, Tempest I combines power, efficiency and flexibility. 650-CFM or 1,200-CFM blower options, dual-level LumiLight LED lighting and high-airflow pro baffle filters ensure a lifetime of exceptional performance. Available with ACT™ and an optional wireless remote control.

Size: 30", 36", 42", 48" CFM: 1,200, 650, 390, 290



#### TIDAL I UNDER-CABINET (AK73)

Tidal I under-cabinet, pro-style hood is the next wave of the future with its optional dual 1300-CFM PowerWave™ blowers and Zephyr Connect capabilities. Featuring professional baffle filters, tri-level LumiLight LED lighting and 6-Speed Proximity Touch Controls.

Size: 30", 36" CFM: 1,300, 700, 590, 390, 290

**Compatible with Zephyr Connect App**







## INSERTS



### MONSOON II ONE-PIECE LINER (AK93)

Now available with LumiLight LED lighting and our exclusive Airflow Control Technology, Monsoon II delivers and then more. It is a great option for custom cabinetry or enclosure with its 22-1/2" body depth. Equipped with professional baffle filters, 6-speed electronic controls and a wireless remote control.

Size: 36", 42", 48", 54" CFM: 1,200, 590, 390



### TORNADO II POWER PACK (AK82)

A power pack with a wireless remote control, adjustable-depth, stainless steel liners in 36" and 42" widths and professional baffle filters to enhance performance.

Size: 29" CFM: 1,000



### TORNADO III POWER PACK (AK83)

Tornado III takes the typical power pack up a notch, with multiple blower options to meet the most demanding chef's requirements. 3-speed electronic controls and wireless remote control put you in command. An adjustable-depth, stainless steel liner is also available.

Size: 38" CFM: 1,000, 600, 290

## OUTDOOR



### SPRUCE ONE-PIECE LINER (AK98)

The Spruce 22-1/2" deep outdoor insert can be installed in wall or island applications and includes 304-grade stainless steel with powerful 1,200 CFM internal blowers. Featuring 3-speed metallic knob controls and directional halogen lighting with pro baffle filters that enhance airflow.

Size: 36", 42", 48", 60" CFM: 1,200



### CYPRESS WALL (AK78)

Cypress features a 304-grade stainless steel body, 3-speed metallic knob controls, dual-level halogen lighting and an extended 32" depth for more capture. Optional 12" fixed duct cover and telescopic duct cover for 10-12' ceilings available.

Size: 36", 42", 48", 54" CFM: 1,200

## **DESIGN & EXPERIENCE CENTER**

To learn more about making a statement in your home with a Zephyr hood, visit us at [zephyronline.com](http://zephyronline.com) to locate a dealer near you.

Or come visit our one-of-a-kind Design & Experience Center, a luxury showroom, in the heart of San Francisco's vibrant Design District. Our display area is the largest of its kind in North America and offers you more than 7,000 square feet of new kitchen discoveries.

2277 Alameda Street  
at Potrero  
San Francisco, CA  
94103

[zephyronline.com/design-and-experience-center](http://zephyronline.com/design-and-experience-center)

### Photo Credit

Ariana Lovato of Honeycomb Interior Design & Emily Elise Photography  
Amy Pearson Design & Meagan Larsen Photography  
Alma Homes  
Schrappner's Fine Cabinetry Incorporated





#### CONTACT US

1.888.880.8368

[zephyronline.com](http://zephyronline.com)

#### DESIGN & EXPERIENCE CENTER

2277 Alameda Street

San Francisco, CA 94103



### Zephyr Kitchen Experience App

Don't just imagine your dream kitchen with a Zephyr range hood—see it with our Augmented Reality App. Inspiring kitchen design and innovation, one hood at a time.

Download it today!

