

ZEPHYR

PRODUCT BULLETIN

HOODS

DESIGNER COLLECTION



September 7, 2021

Revision: 2021-04

From: Jeremy Snider

Subject: **Zephyr Designer Collection Updates**

Zephyr is driven by the idea that everything in the home is an opportunity for personal expression. That philosophy shines through with the introduction of six new kitchen ventilation hoods in our Designer Collection. Inspired by geometry and modern art, the Zephyr Designer Collection features a timeless aesthetic that can complement a broad range of kitchen styles and materials – making them a gorgeous addition to any kitchen. From the iconic Horizon hood that appears to float above the cooktop, to the glamorous Mesa Wall in bold new finishes, the Designer Collection is an expression of artistry and groundbreaking engineering.

ZEPHYR

PRODUCT BULLETIN

HOODS

DESIGNER COLLECTION



The **Horizon** hood is a low-profile, freefall design that makes a bold statement in the kitchen. Available in white or black glass with a sleek matte finish, Horizon was an original Zephyr showstopper and now makes its return with an updated design. Horizon features Dual Capture Zones that collect contaminants through two entry points to improve capture performance for hard working home chefs. Capacitive touch controls integrate into the flat glass surface and ambient lighting illuminates the cooking surface when in use and provides a soft, intimate combination of light and shadows at night.



Inspired by an abstract art installation, the design-forward **Apex Wall** features a two-layer glass canopy with Perimeter Aspiration System to ensure a smoke- and grease-free kitchen. Available in white or matte black glass, Apex pushes the boundaries of kitchen ventilation with its thin profile, geometric shape, and Capacitive Touch Controls.

ZEPHYR

PRODUCT BULLETIN

HOODS

DESIGNER COLLECTION



The **Vista Wall** and **Vista Island** are the perfect marriage of design and technology. Both hoods are equipped with the cutting-edge Perimeter Aspiration System, a technique that increases air velocity and improves the capture of cooking contaminants. Featuring a low-profile design, the Vista range hoods have a sleek stainless steel body, brilliant LED lighting, and Invisible Touch Controls that blend seamlessly into the range hood canopy when not in use.



Streamlined pyramid-shaped styling and a menu of blower options make this updated and improved **Layers Wall** the timeless classic hood your kitchen needs. Featuring our state-of-the-art Perimeter Aspiration System, which increases air velocity and improves the capture of cooking contaminants. Packed with a bevy of additional features like Invisible Touch Controls and tri-level LED lighting.

ZEPHYR

PRODUCT BULLETIN

HOODS

DESIGNER COLLECTION



The **Mesa Wall** is a designer's dream with its three dramatic finishes in matte black, satin gold, and stainless steel. With Invisible Touch Controls, hybrid baffle filters, and multiple blower options, Mesa's sophisticated design takes glamour to new heights and perfectly complements mixed metallics in the kitchen. Optional accessories include duct covers in matte black, satin gold, and stainless steel, along with an accent rail in either satin gold or stainless steel. Both accessories can be mixed and matched with any Mesa hood,

ZEPHYR

PRODUCT BULLETIN

HOODS

DESIGNER COLLECTION

PRODUCT AVAILABILITY

- Most models available now

PRODUCT LITERATURE AND INTERNET

- Zephyronline.com is updated
- Additional collaterals are available in our [Partner Portal](#) - Range Hood Catalog

PRICE SHEETS

- Pricing provided in our October 2021 price sheets

ATTACHMENT TO THIS BULLETIN

- Spec sheets

Thank you!

Jeremy Snider

Vice President of Product

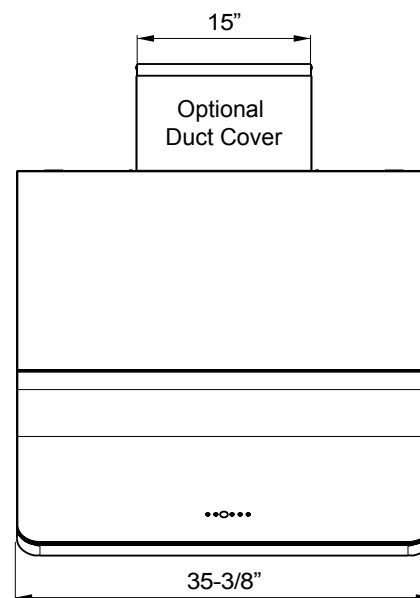
DESIGNER

HORIZON

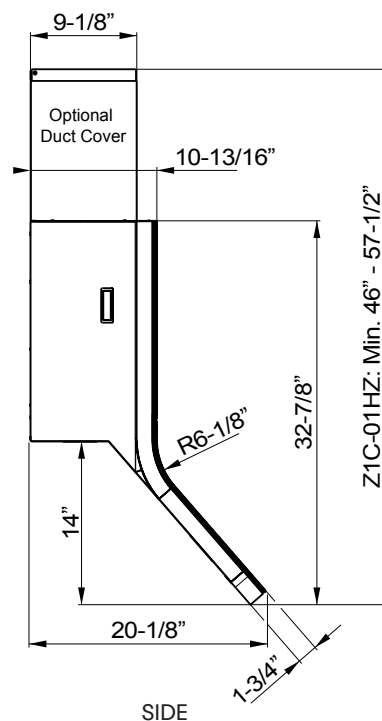
WALL

ZEPHYR

ZEPHYRONLINE.COM



FRONT



SIDE

MODEL

Matte Black	DHZ-M90AMBX
Matte White	DHZ-M90AMWX
Size	90cm (35-3/8")

BLOWER PERFORMANCE

Internal Blower (CBI-290C)*	200-290 CFM, 1.4-3 sones
Internal Blower (CBI-600A)*	240-600 CFM, 1.8-6 sones
In-Line Blower (PBN-1000A)*	500-1,000 CFM, sones NA
External Blower (CBE-1000)*	500-1,000 CFM, sones NA

FEATURES

Controls	Capacitive Touch
Speed Levels	3
Auto Delay-Off	Yes
CleanAir Function**	Yes
Lighting	LED, 5W x6
Tri-Level Lighting	Yes
Ambient Lighting	Yes
Filters	Hybrid Baffle x4
Dual Capture Zones	Yes
Recirculating***	Yes
ADA Compliant	Yes, with remote option

DUCT SPECIFICATIONS

Vertical Single Internal Blower	6" Round
Vertical In-Line/External Blower	10" to 8" Round****
Horizontal Single Internal Blower	6" Round
Horizontal In-Line/External Blower	10" to 8" Round****

AC POWER

Hood w/ CBI-290C	120V, 60Hz, Max. 1.3A
Hood w/ CBI-600A	120V, 60Hz, Max. 3.3A
Hood w/ PBN-1000A	120V, 60Hz, Max. 5.7A
Hood w/ CBE-1000	120V, 60Hz, Max. 6.9A

OPTIONAL ACCESSORIES

Recirculating Kit	Z0F-C010
Remote Control	14000010
Duct Cover - Stainless Steel	Z1C-01HZ
Make-Up Air Kit	MUA006A (600 CFM) MUA008A (1,000 CFM)

MOUNTING HEIGHT RANGE†	22" - 34"
------------------------	-----------

WARRANTY	2 year parts, 1 year labor
----------	----------------------------

HOOD HEIGHT CALCULATOR - With Optional Duct Cover

CEILING HEIGHT	8'	8.5'	9'	9.5'	10'	10.5'	11'	12'
MOUNTING HEIGHT†	NA	NA	22" - 26"	22" - 32"	26.5" - 34"	32.5" - 34"	NA	NA

*Blower sold separately.

**CleanAir turns your hood on once every four hours for 10 minutes on speed one.

***Not compatible with optional duct cover.

****10" round duct connects to external and in-line blower. Must transition from 10" to 8" before duct passes through ceiling. A 10" to 8" adapter is included with external and in-line blowers.

†Mounting height refers to distance between top of a 36" tall cooking surface and bottom of hood.

DESIGNER

APEX

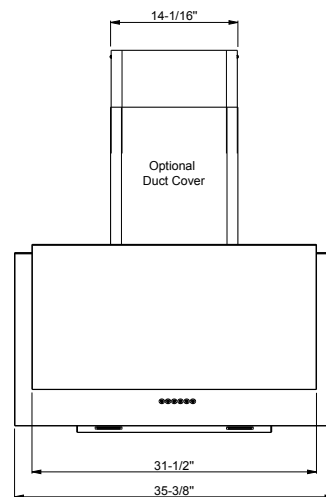
WALL

ZEPHYR

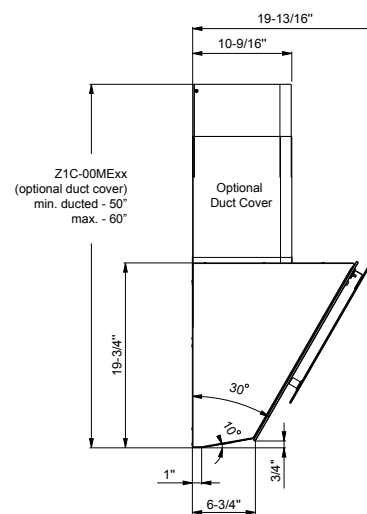
ZEPHYRONLINE.COM



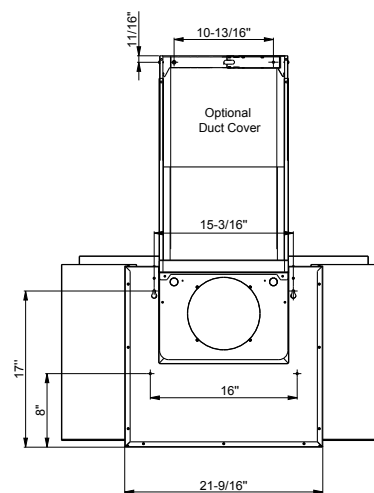
Shown with optional duct cover



FRONT



SIDE



BACK

MODEL

Matte Black	DAP-M90AMBX
Matte White	DAP-M90AMWX
Size	90cm (35-3/8")

BLOWER PERFORMANCE

Internal Blower (CBI-290C)*	200-290 CFM, 1.4-3 sones
Internal Blower (CBI-600A)*	240-600 CFM, 1.8-6 sones
In-Line Blower (PBN-1000A)*	500-1,000 CFM, sones NA
External Blower (CBE-1000)*	500-1,000 CFM, sones NA

FEATURES

Controls	Capacitive Touch
Speed Levels	3
Auto Delay-Off	Yes
CleanAir Function**	Yes
Lighting	LED, 5W x2
Tri-Level Lighting	Yes
Filters	Aluminum Mesh x2
Recirculating***	Yes
ADA Compliant	Yes, with remote option

DUCT SPECIFICATIONS

Vertical Single Internal Blower	6" Round
Vertical In-Line/External Blower	10" to 8" Round****
Horizontal Single Internal Blower	6" Round
Horizontal In-Line/External Blower	10" to 8" Round****

AC POWER

Hood w/ CBI-290C	120V, 60Hz, Max. 1A
Hood w/ CBI-600A	120V, 60Hz, Max. 3A
Hood w/ PBN-1000A	120V, 60Hz, Max. 5.4A
Hood w/ CBE-1000	120V, 60Hz, Max. 6.6A

OPTIONAL ACCESSORIES

Recirculating Kit	ZRC-00AP
Remote Control	14000010
Duct Cover - Matte Black	Z1C-00MEMB
Duct Cover - Stainless Steel	Z1C-00MESS
Make-Up Air Kit	MUA006A (600 CFM) MUA008A (1,000 CFM)

MOUNTING HEIGHT RANGE†	22" - 34"
------------------------	-----------

WARRANTY	2 year parts, 1 year labor
----------	----------------------------

HOOD HEIGHT CALCULATOR - With Optional Duct Cover

CEILING HEIGHT	8'	8.5'	9'	9.5'	10'	10.5'	11'	12'
MOUNTING HEIGHT†	NA	NA	22" - 22"	22" - 28"	24" - 34"	30" - 34"	NA	NA

*Blower sold separately.

**CleanAir turns your hood on once every four hours for 10 minutes on speed one.

***Not compatible with optional duct cover.

****10" round duct connects to external and in-line blower. Must transition from 10" to 8" before duct passes through ceiling. A 10" to 8" adapter is included with external and in-line blowers.

†Mounting height refers to distance between top of a 36" tall cooking surface and bottom of hood.

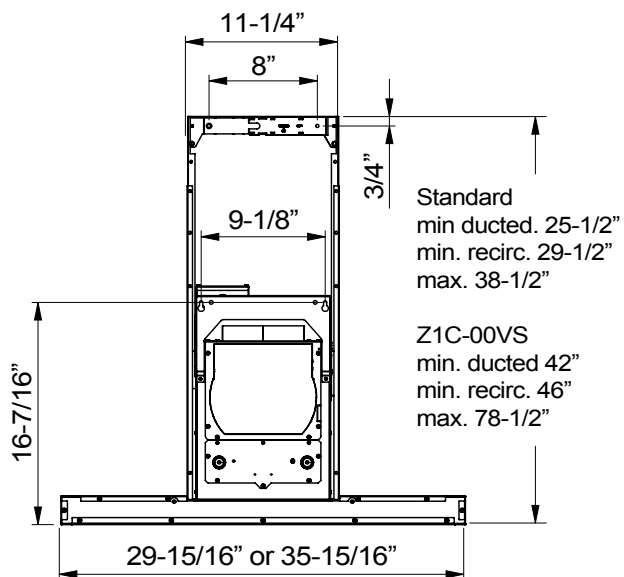
DESIGNER

VISTA

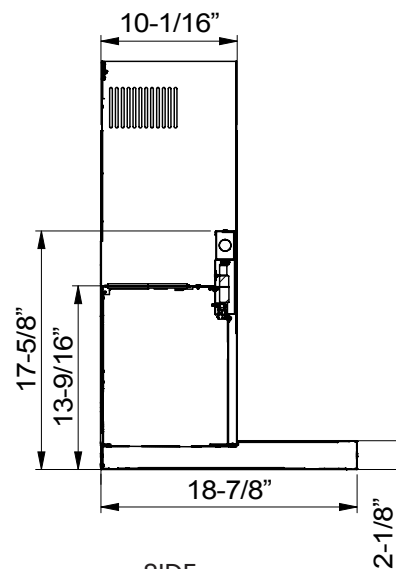
WALL

ZEPHYR

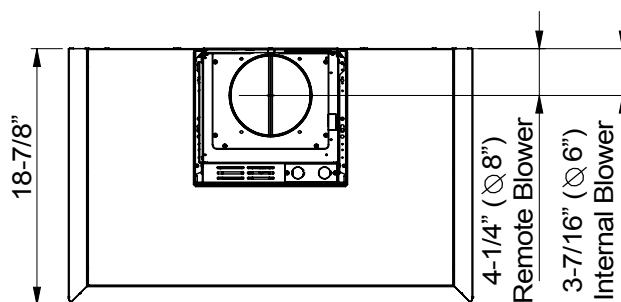
ZEPHYRONLINE.COM



BACK



SIDE



TOP

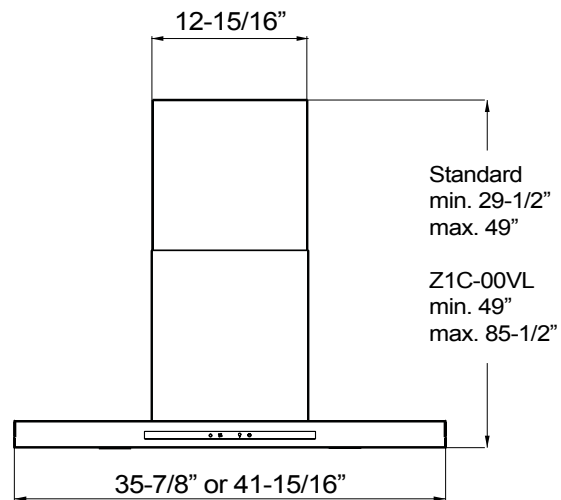
DESIGNER

VISTA

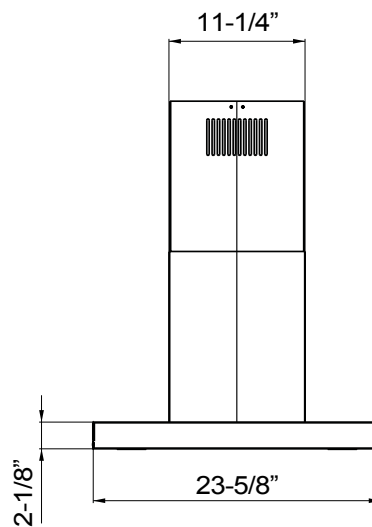
ISLAND

ZEPHYR

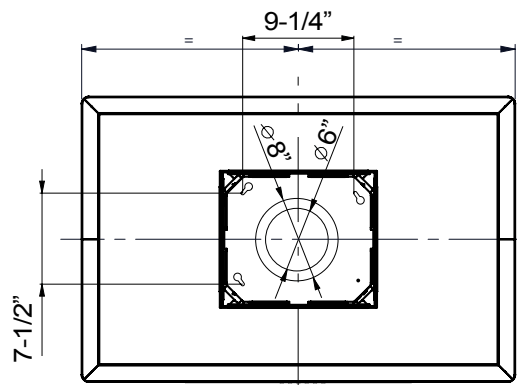
ZEPHYRONLINE.COM



FRONT



SIDE



TOP

MODEL

Stainless Steel
SizeDVL-E36ASSX
36"DVL-E42ASSX
42"

BLOWER PERFORMANCE

Internal Blower (CBI-290C)*	200-290 CFM, 1.4-3 sones	200-290 CFM, 1.4-3 sones
Internal Blower (CBI-600A)*	240-600 CFM, 1.8-6 sones	240-600 CFM, 1.8-6 sones
In-Line Blower (PBN-1000A)*	500-1,000 CFM, sones NA	500-1,000 CFM, sones NA
External Blower (CBE-1000)*	500-1,000 CFM, sones NA	500-1,000 CFM, sones NA

FEATURES

Controls	Invisible Touch	Invisible Touch
Speed Levels	3	3
Auto Delay-Off	Yes	Yes
CleanAir Function**	Yes	Yes
Lighting	LED, 5W x4	LED, 5W x4
Tri-Level Lighting	Yes	Yes
Filters	Aluminum Mesh x3	Aluminum Mesh x3
Perimeter Aspiration System	Yes	Yes
Recirculating	Yes	Yes
Extension Duct Cover Option	Yes, Up to 12' Ceiling	Yes, Up to 12' Ceiling
ADA Compliant	Yes, with remote option	Yes, with remote option

DUCT SPECIFICATIONS

Vertical Single Internal Blower	6" Round	6" Round
Vertical In-Line/External Blower	10" to 8" Round***	10" to 8" Round***

AC POWER

Hood w/ CBI-290C	120V, 60Hz, Max. 1.1A	120V, 60Hz, Max. 1.1A
Hood w/ CBI-600A	120V, 60Hz, Max. 3.1A	120V, 60Hz, Max. 3.1A
Hood w/ PBN-1000A	120V, 60Hz, Max. 5.5A	120V, 60Hz, Max. 5.5A
Hood w/ CBE-1000	120V, 60Hz, Max. 6.7A	120V, 60Hz, Max. 6.7A

OPTIONAL ACCESSORIES

Recirculating Kit	ZRC-00VL	ZRC-00VL
Remote Control	14000010	14000010
Duct Cover - Stainless Steel	Z1C-00VL	Z1C-00VL
Make-Up Air Kit	MUA006A (600 CFM) MUA008A (1,000 CFM)	MUA006A (600 CFM) MUA008A (1,000 CFM)

MOUNTING HEIGHT RANGE**** 24" - 36"

24" - 36"

WARRANTY

2 year parts, 1 year labor

2 year parts, 1 year labor

CEILING HEIGHT		8'	8.5'	9'	9.5'	10'	10.5'	11'	12'
STANDARD DUCT COVER	Ducted Mounting Height*	24" - 35"	24" - 36"	24" - 36"	29" - 36"	35" - 36"	NA	NA	NA
	Recirc Mounting Height*	24" - 30.5"	24" - 36"	24" - 36"	29" - 36"	35" - 36"	NA	NA	NA
EXTENSION DUCT COVER	Ducted Mounting Height*	NA	NA	NA	24" - 29"	24" - 35"	24" - 36"	24" - 36"	25" - 36"
	Recirc Mounting Height*	NA	NA	NA	24" - 24.5"	24" - 30.5"	24" - 36"	24" - 36"	25" - 36"

*Blower sold separately.

**CleanAir turns your hood on once every four hours for 10 minutes on speed one.

***10" round duct connects to external and in-line blower. Must transition from 10" to 8" before duct passes through ceiling. A 10" to 8" adapter is included with external and in-line blowers.

****Mounting height refers to distance between top of a 36" tall cooking surface and bottom of hood.

DID YOU KNOW?

The Perimeter Aspiration System moves airflow away from the central area of the hood and evenly distributes it through narrow openings around the perimeter of the hood. This ventilation method increases air velocity and improves the capture of cooking contaminants.

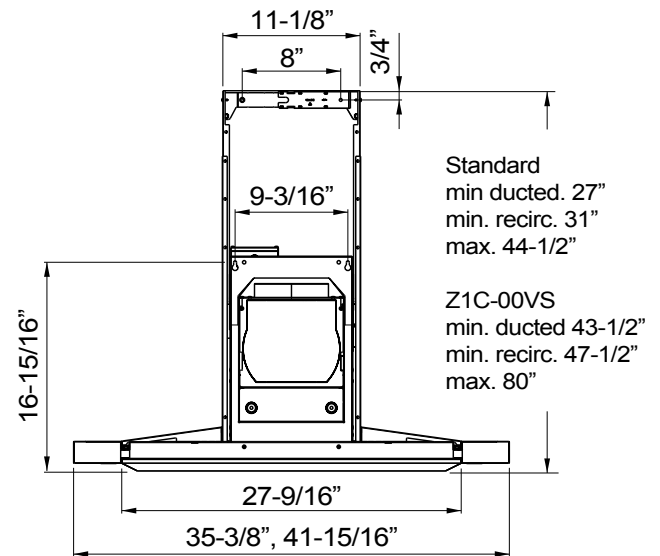
DESIGNER

LAYERS

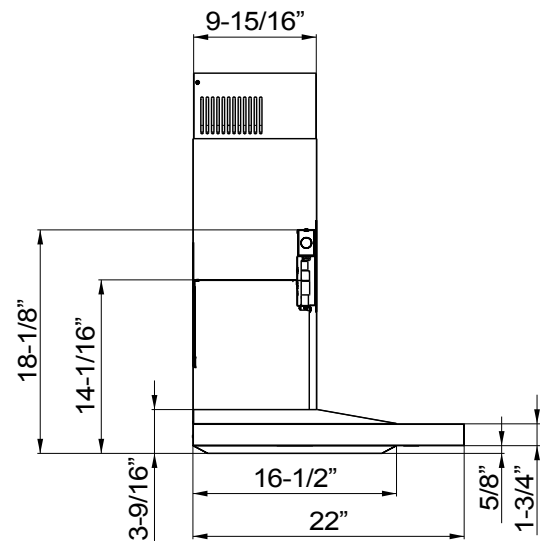
WALL

ZEPHYR

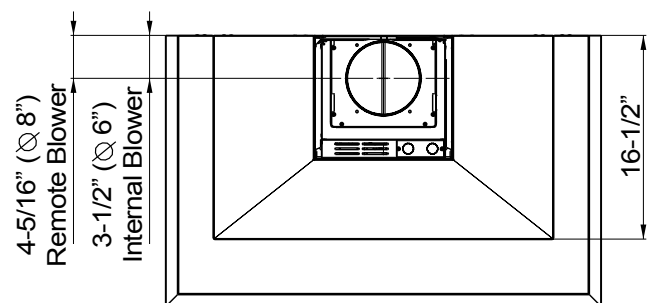
ZEPHYRONLINE.COM



BACK



SIDE



TOP

MODEL

Stainless Steel
SizeDLA-M90ASSX
90cm (35-3/8")DLA-E42ASSX
42"

BLOWER PERFORMANCE

Internal Blower (CBI-290C)*	200-290 CFM, 1.4-3 sones	200-290 CFM, 1.4-3 sones
Internal Blower (CBI-600A)*	240-600 CFM, 1.8-6 sones	240-600 CFM, 1.8-6 sones
In-Line Blower (PBN-1000A)*	500-1,000 CFM, sones NA	500-1,000 CFM, sones NA
External Blower (CBE-1000)*	500-1,000 CFM, sones NA	500-1,000 CFM, sones NA

FEATURES

Controls	Invisible Touch	Invisible Touch
Speed Levels	3	3
Auto Delay-Off	Yes	Yes
CleanAir Function**	Yes	Yes
Lighting	LED, 5W x4	LED, 5W x4
Tri-Level Lighting	Yes	Yes
Filters	Aluminum Mesh x1	Aluminum Mesh x1
Perimeter Aspiration System	Yes	Yes
Recirculating	Yes	Yes
Extension Duct Cover Option	Yes, Up to 12' Ceiling	Yes, Up to 12' Ceiling
ADA Compliant	Yes, with remote option	Yes, with remote option

DUCT SPECIFICATIONS

Vertical Single Internal Blower	6" Round	6" Round
Vertical In-Line/External Blower	10" to 8" Round***	10" to 8" Round***

AC POWER

Hood w/ CBI-290C	120V, 60Hz, Max. 1.1A	120V, 60Hz, Max. 1.1A
Hood w/ CBI-600A	120V, 60Hz, Max. 3.1A	120V, 60Hz, Max. 3.1A
Hood w/ PBN-1000A	120V, 60Hz, Max. 5.5A	120V, 60Hz, Max. 5.5A
Hood w/ CBE-1000	120V, 60Hz, Max. 6.7A	120V, 60Hz, Max. 6.7A

OPTIONAL ACCESSORIES

Recirculating Kit	ZRC-00VS	ZRC-00VS
Remote Control	14000010	14000010
Duct Cover - Stainless Steel	Z1C-00VS	Z1C-00VS
Make-Up Air Kit	MUA006A (600 CFM) MUA008A (1,000 CFM)	MUA006A (600 CFM) MUA008A (1,000 CFM)

MOUNTING HEIGHT RANGE**** 24" - 36"

24" - 36"

WARRANTY

2 year parts, 1 year labor

2 year parts, 1 year labor

CEILING HEIGHT		8'	8.5'	9'	9.5'	10'	10.5'	11'	12'
STANDARD DUCT COVER	Ducted Mounting Height*	24" - 33"	24" - 36"	27.5" - 36"	33.5" - 36"	NA	NA	NA	NA
	Recirc Mounting Height*	24" - 29"	24" - 35"	27.5" - 36"	33.5" - 36"	NA	NA	NA	NA
EXTENSION DUCT COVER	Ducted Mounting Height*	NA	NA	24" - 28.5"	24" - 34.5"	24" - 36"	24" - 36"	24" - 36"	28" - 36"
	Recirc Mounting Height*	NA	NA	24" - 24.5"	24" - 30.5"	24" - 36"	24" - 36"	24" - 36"	28" - 36"

*Blower sold separately.

**CleanAir turns your hood on once every four hours for 10 minutes on speed one.

***10" round duct connects to external and in-line blower. Must transition from 10" to 8" before duct passes through ceiling. A 10" to 8" adapter is included with external and in-line blowers.

****Hood with lights only.

†Mounting height refers to distance between top of a 36" tall cooking surface and bottom of hood.

DID YOU KNOW?

The Perimeter Aspiration System moves airflow away from the central area of the hood and evenly distributes it through narrow openings around the perimeter of the hood. This ventilation method increases air velocity and improves the capture of cooking contaminants.

MODEL

Stainless Steel
SizeDVS-E30ASSX
30"DVS-E36ASSX
36"

BLOWER PERFORMANCE

Internal Blower (CBI-290C)*

200-290 CFM, 1.4-3 sones

200-290 CFM, 1.4-3 sones

Internal Blower (CBI-600A)*

240-600 CFM, 1.8-6 sones

240-600 CFM, 1.8-6 sones

In-Line Blower (PBN-1000A)*

500-1,000 CFM, sones NA

500-1,000 CFM, sones NA

External Blower (CBE-1000)*

500-1,000 CFM, sones NA

500-1,000 CFM, sones NA

FEATURES

Controls

Invisible Touch

Invisible Touch

Speed Levels

3

3

Auto Delay-Off

Yes

Yes

CleanAir Function**

Yes

Yes

Lighting

LED, 5W x2

LED, 5W x2

Tri-Level Lighting

Yes

Yes

Filters

Aluminum Mesh x2

Aluminum Mesh x3

Perimeter Aspiration System

Yes

Yes

Recirculating

Yes

Yes

Extension Duct Cover Option ADA

Yes, Up to 12' Ceiling

Yes, Up to 12' Ceiling

Compliant

Yes, with remote option

Yes, with remote option

DUCT SPECIFICATIONS

Vertical Single Internal Blower

6" Round

6" Round

Vertical In-Line/External Blower

10" to 8" Round***

10" to 8" Round***

AC POWER

Hood w/ CBI-290C

120V, 60Hz, Max. 1A

120V, 60Hz, Max. 1A

Hood w/ CBI-600A

120V, 60Hz, Max. 3A

120V, 60Hz, Max. 3A

Hood w/ PBN-1000A

120V, 60Hz, Max. 5.4A

120V, 60Hz, Max. 5.4A

Hood w/ CBE-1000

120V, 60Hz, Max. 6.6A

120V, 60Hz, Max. 6.6A

OPTIONAL ACCESSORIES

Recirculating Kit

ZRC-00VS

ZRC-00VS

Remote Control

14000010

14000010

Duct Cover - Stainless Steel

Z1C-00VS

Z1C-00VS

Stainless Steel Telescopic Backsplash

AK1710

AK1716

Make-Up Air Kit

MUA006A (600 CFM)

MUA006A (600 CFM)

MUA008A (1,000 CFM)

MUA008A (1,000 CFM)

MOUNTING HEIGHT RANGE****

24" - 36"

24" - 36"

WARRANTY

2 year parts, 1 year labor

2 year parts, 1 year labor

CEILING HEIGHT		8'	8.5'	9'	9.5'	10'	10.5'	11'	12'
STANDARD DUCT COVER	Ducted Mounting Height*	24" - 34.5"	27.5" - 36"	33.5" - 36"	NA	NA	NA	NA	NA
	Recirc Mounting Height*	24" - 30.5"	27.5" - 36"	33.5" - 36"	NA	NA	NA	NA	NA
EXTENSION DUCT COVER	Ducted Mounting Height*	NA	24" - 24"	24" - 30"	24" - 36"	24" - 36"	24" - 36"	24" - 36"	29.5" - 36"
	Recirc Mounting Height*	NA	NA	24" - 26"	24" - 32"	24" - 36"	24" - 36"	24" - 36"	29.5" - 36"

*Blower sold separately.

**CleanAir turns your hood on once every four hours for 10 minutes on speed one.

***10" round duct connects to external and in-line blower. Must transition from 10" to 8" before duct passes through ceiling. A 10" to 8" adapter is included with external and in-line blowers.

****Mounting height refers to distance between top of a 36" tall cooking surface and bottom of hood.

DID YOU KNOW?

The Perimeter Aspiration System moves airflow away from the central area of the hood and evenly distributes it through narrow openings around the perimeter of the hood. This ventilation method increases air velocity and improves the capture of cooking contaminants.

DESIGNER

MESA

WALL

ZEPHYR

ZEPHYRONLINE.COM



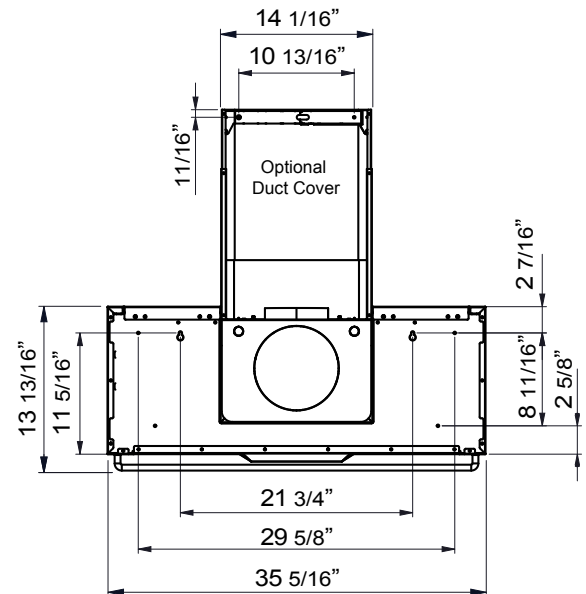
Shown with optional gold accent rail



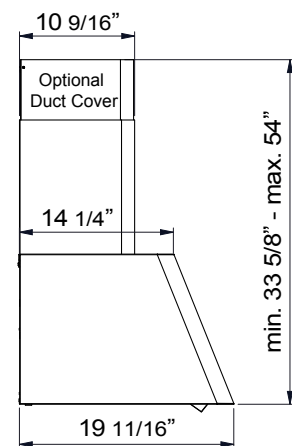
Shown with optional gold accent rail



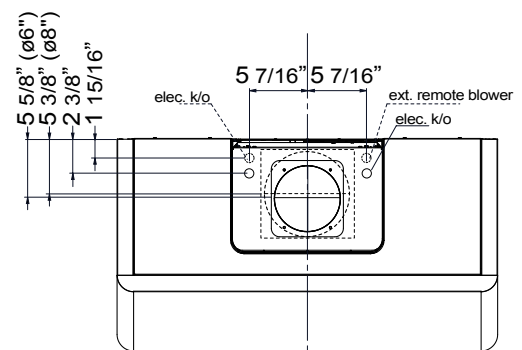
Shown with optional stainless steel accent rail



BACK



SIDE



TOP

MODEL

Matte Black	DME-M90AMBX
Satin Gold	DME-M90ASGX
Stainless Steel	DME-M90ASSX
Size	90cm (35-3/8")

BLOWER PERFORMANCE

Internal Blower (CBI-290C)*	200-290 CFM, 1.4-3 sones
Internal Blower (CBI-600A)*	240-600 CFM, 1.8-6 sones
In-Line Blower (PBN-1000A)*	500-1,000 CFM, sones NA
External Blower (CBE-1000)*	500-1,000 CFM, sones NA

FEATURES

Controls	Invisible Touch
Speed Levels	3
Auto Delay-Off	Yes
CleanAir Function**	Yes
Lighting	LED, 5W x2
Tri-Level Lighting	Yes
Filters	Hybrid Baffle x3
Recirculating***	Yes
ADA Compliant	Yes, with remote option

DUCT SPECIFICATIONS

Vertical Single Internal Blower	6" Round
Vertical In-Line/External Blower	10" to 8" Round****
Horizontal Single Internal Blower	6" Round
Horizontal In-Line/External Blower	10" to 8" Round****

AC POWER

Hood w/ CBI-290C	120V, 60Hz, Max. 1A
Hood w/ CBI-600A	120V, 60Hz, Max. 3A
Hood w/ PBN-1000A	120V, 60Hz, Max. 5.4A
Hood w/ CBE-1000	120V, 60Hz, Max. 6.6A

OPTIONAL ACCESSORIES

Recirculating Kit	ZRC-01ME
Remote Control	14000010
Duct Cover - Matte Black	Z1C-00MEMB
Duct Cover - Satin Gold	Z1C-00MESG
Duct Cover - Stainless Steel	Z1C-00MESS
Accent Rail - Satin Gold	MERAIL-00SG
Accent Rail - Stainless Steel	MERAIL-00SS
Make-Up Air Kit	MUA006A (600 CFM) MUA008A (1,000 CFM)

MOUNTING HEIGHT RANGE†	24" - 36"
------------------------	-----------

WARRANTY	2 year parts, 1 year labor
----------	----------------------------

HOOD HEIGHT CALCULATOR - With Optional Duct Cover

CEILING HEIGHT	8'	8.5'	9'	9.5'	10'	10.5'	11'	12'
MOUNTING HEIGHT†	24" - 26"	24" - 32"	24" - 36"	24" - 36"	30" - 36"	36" - 36"	NA	NA

*Blower sold separately.

**CleanAir turns your hood on once every four hours for 10 minutes on speed one.

***Not compatible with optional duct cover.

****10" round duct connects to external and in-line blower. Must transition from 10" to 8" before duct passes through ceiling. A 10" to 8" adapter is included with external and in-line blowers.

†Mounting height refers to distance between top of a 36" tall cooking surface and bottom of hood.