

ZEPHYR



VENTILATION COLLECTIONS



HELLO



Driven by the idea that everything in the home is an opportunity for personal expression.

Quiet Performance

Our range hoods aren't just powerful. They're powerfully quiet, serving up great ventilation free of noise so you can enjoy entertaining family and friends nearby.

Superior Craftsmanship

With an unrelenting eye for detail, we deliver exceptional quality, fit and finish you can see, feel and appreciate.

Performance Versatility

Our products offer a wide range of power and innovation starting with our Zephyr Connect Technology, universal make-up air dampers, exclusive Airflow Control Technology™ (ACT™) and CFM levels ranging from 250 up to 1,300.

Zephyr Warranty

We back our products with an unparalleled level of service and a generous multi-year warranty.

Zephyr continues to lead the industry with innovations resulting in the most advanced range hood technology available today.

Zephyr Connect App

Zephyr Connect range hoods are compatible with the Zephyr Connect App, which allows you to control your range hood remotely from anywhere using a Wi-Fi network and internet.

Change the fan speed, set the delay-off, turn lights on/off, and more. Zephyr Connect provides detailed product information and will send users helpful notifications such as clean filter reminders or whether or not the hood was turned off after use.

The Zephyr Connect App seamlessly interacts with your smart devices such as Amazon Alexa or Google Home smart speakers for voice activation. Available to download on mobile devices from Google Play or the Apple App Store.

PowerWave Blower™

Designed to deliver best-in-class performance with unparalleled quiet operation, Zephyr PowerWave represents a breakthrough in kitchen technology. The first range hood blower with three-phase AC power, PowerWave has unique aerodynamic blades to help move up to 750 CFM of air while minimizing noise and improving efficiency. PowerWave is also versatile by allowing you to combine two blowers together to achieve 1,300 CFM, making it the most powerful dual-internal blower on the market.

Airflow Control Technology™

ACT™ or Airflow Control Technology, is a proprietary feature that limits blower CFM to ensure your home is safe and in compliance with local make-up air codes.





+
ZEPHYR ZEPHYR
CONNECT

At Zephyr, we're transforming the kitchen through design, discovery and customer care.

Control Your Hood From Anywhere

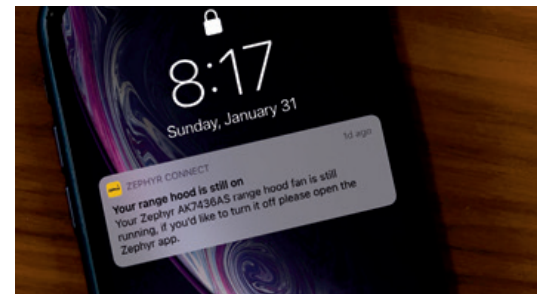
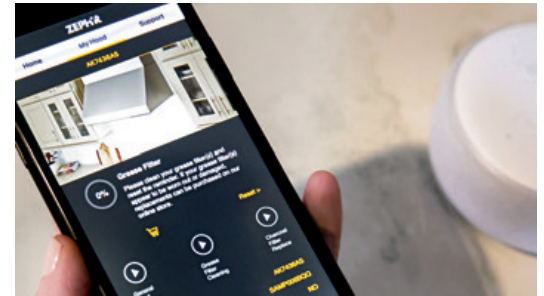
Control compatible range hoods remotely from anywhere, changing fan speed, lighting and more. The app seamlessly connects with smart devices such as Amazon Alexa or Google Home smart speakers for voice activation.

Receive Notifications and Reminders

Convenience is amplified further with detailed product information, reminders for cleaning or filter purchase/replacement, or simply to turn a hood off after use.

Customer Support Resources

The app provides quick access to warranty information as well as a library of how-to videos.



THE COLLECTIONS

We think you'll find our Designer, Core, and Pro Collections offer the ultimate combination: performance-driven technology and peerless design.



DESIGNER



CORE



PRO

DESIGNER COLLECTION

At Zephyr, great design is never an afterthought or a luxury – it's a way of life. Along with our designer partnerships, we've created a visionary collection that fuses groundbreaking engineering with contemporary lines and an expression of artistry with powerful performance.





ISLAND



VISTA ISLAND (DVL)

The low-profile Vista Island hood has curved good looks and the engineering and power to back it up. Our Perimeter Aspiration System ensures increased air velocity and improved capture of contaminants for the cleanest cooking yet. Invisible Touch Controls that stay hidden until you need them serve to make this hood as efficient as it is beautiful. Size 36", 42" CFM: 1,000, 600, 290



TRAPEZE ISLAND (CTP)

With its directional Bloom™ HD LED lighting and a graceful, slow-curve canopy, the Trapeze is more than a focal point – it's a bold statement.

Size: 48", 54", 60" CFM: 1,000, 600, 290



LUX ISLAND (ALU)

Enjoy unobstructed views of your kitchen with the modern, minimalist lines of the Lux. This sleek hood includes a wireless remote control, and it discreetly mounts into the ceiling above your range or cooktop. Equipped with tri-level LED light strips and Perimeter Aspiration System. Available in white or stainless steel.

Size: 43", 63" CFM: 1,100, 1,000, 600, 290

WALL



APEX WALL (DAP)

Exceptional style, plus the power and performance you'd expect from Zephyr. Featuring white or black glass with matte finish, easy Capacitive Touch Controls and a recirculating option, the Apex Wall is a hood for today, tomorrow, and beyond. Also includes duct cover and remote control options.

Size 36" CFM: 1,000, 600, 290



OKEANITO WALL (COK)

A sleek combination of whimsy and discipline, the Okeanito boasts perforated side panels that radiate gentle ambient light, infusing its surroundings with a sense of grace and calm.

Size: 36", 42", 48" CFM: 1,000, 600, 290



HORIZON WALL (DHZ)

Appearing to float above your cooktop, the iconic Horizon is back. Our original showstopper, Horizon will make every cooking session look and feel cooler. Featuring dual capture zones, capacitive touch controls, multiple blower options, hybrid baffle filters, and better-than-ever soft ambient lighting. Available in white or black glass with matte finish, and compatible with an optional remote control accessory. Size 36" CFM: 1,000, 600, 290



LAYERS WALL (DLA)

Streamlined pyramid-shaped styling and a menu of blower options make this updated and improved Layers Wall the timeless classic hood your kitchen needs. Featuring our state-of-the-art Perimeter Aspiration System, which increases air velocity and improves the capture of cooking contaminants. Packed with a bevy of additional features like Invisible Touch Controls and tri-level LED lighting. Size 36", 42" CFM: 1,000, 600, 290



VISTA WALL (DVS)

Low profile, curvy good looks and matchless power add up to a hood that's at home in any kitchen. The cutting-edge Perimeter Aspiration System will increase air velocity and improve the capture of cooking contaminants for a cleaner cooking experience. Featuring Invisible Touch Controls that stay invisible until you need them, the Vista Wall promises to seriously up your chef game. Size 30", 36" CFM: 1,000, 600, 290



MESA WALL (DME)

Taking kitchen glamour to new heights, the Mesa Wall hood is available in three high-style finishes: satin gold, matte black, and stainless steel, for the very latest in kitchen design trends. With Invisible Touch Controls, hybrid baffle filters and multiple blower options, the Mesa is set to become the hardworking star of the most fashionable kitchens. Additional options include an accent rail in satin gold or stainless steel; remote control; and duct cover. Size 36" CFM: 1,000, 600, 290

DOWNDRAFT



LIFT DOWNDRAFT (DLI)

The Lift Downdraft is everything you want in a luxury ventilation system – power, performance, and good looks. Featuring dual-level BriteStrip™ LED lighting, Tri-Capture Zones and 4-Way Ducting, the Lift is ready to help you rise to any occasion with the touch of a button. Size: 30", 36" CFM: 1,000, 600

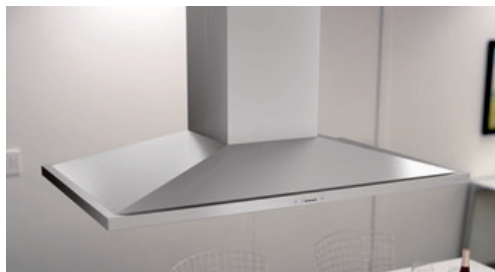
CORE COLLECTION

Classics never go out of style. Much more than just functional products, each product in the Core Collection can serve as the ultimate foundation of a great kitchen.





ISLAND



ANZIO ISLAND (ZAZ)

Anzio's 600-CFM blower, ICON Touch® controls, dual-level BriteStrip™ LED lighting and Quick-Lock installation system put it a step ahead of the competition. Available with ACT™ technology.

Size: 36", 42" CFM: 600, 390, 290



LUCÉ ISLAND (ZLC)

Boasting an elegant slice of sleek stainless steel married with the subtle glamor of accent lighting in Cloud White, Deep Blue, and Amber, Lucé is the (gorgeous) future of range hoods. Available with ACT™ technology and our Quick-Lock installation system with magnetic duct covers.

Size: 36", 42" CFM: 600, 390, 290



NAPOLI ISLAND (ZNA)

Strong and sophisticated with upwardly-angled walls, Napoli makes an impression. Enhanced with a 700-CFM PowerWave™ blower, Zephyr Connect technology, and tri-level LumiLight LED lighting. Available with the Quick-Lock installation system and baffle filters.

Size: 36", 42" CFM: 700, 590, 390, 290

Compatible with Zephyr Connect App



MILANO ISLAND (ZML)

Milano Island now boasts a 700-CFM PowerWave™ blower and Zephyr Connect technology — making it a more powerful and energy efficient range hood. Featuring tri-level LumiLight LED lighting, ACT™ and the Quick-Lock Installation System. Available with glass and stainless steel canopy options and an optional wireless remote control.

Size: 36", 42" CFM: 700, 590, 390, 290

Compatible with Zephyr Connect App



MODENA ISLAND (ZMD)

Resembling a floating canopy made of steel and glass, Modena houses dual-level LumiLight LED lighting and 5-speed ICON Touch® controls within its one-inch stainless steel canopy. Includes the exclusive Quick-Lock Installation System and ACT™.

Size: 36", 42" CFM: 600, 390, 290



SIENA PRO ISLAND (ZSL)

With it's classic, professional-style design Siena Pro Island is equipped with a 1,200-CFM blower, hybrid baffle filters and Zephyr's ICON Touch® controls. Available with ACT™ technology.

Size: 42", 48" CFM: 1,200, 590, 390



RAVENNA ISLAND (ZRE)

The Ravenna's delicate curve of a smoke-gray glass canopy and our sleek black stainless steel finish with an anti-smudge Titanium coating for extra durability and easy cleaning add an elegance to your kitchen. Complete with ACT™ technology, ICON Touch® controls and BriteStrip™ LED lighting.

Size: 36", 42" CFM: 600, 390, 290



ROMA ISLAND (ZRM)

Updated with a new low-profile 3" canopy the Roma is ideal for the design-savvy chef or builder who refuses to settle for mediocrity. Available with BriteStrip™ LED lighting and ACT™ technology.

Size: 36", 42" CFM: 600, 390, 290

WALL



ANZIO WALL (ZAN)

A low-profile, chimney-style range hood that will add style and value to any kitchen. Complete with a 600-CFM blower, ICON Touch® controls and our exclusive ACT™ technology. Available in stainless steel and black stainless.

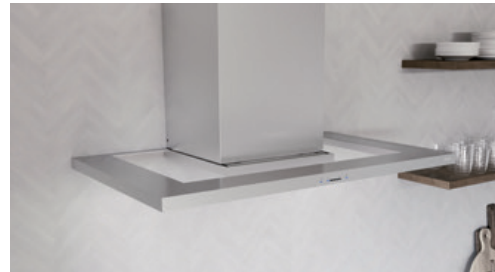
Size: 24", 30", 36" CFM: 600, 390, 290



VERONA ISLAND (ZVN)

The Verona's straight-glass canopy also serves as an ambiance setting LED display that rotates between Cloud White, Deep Blue, and Amber color options. Includes the exclusive Quick-Lock Installation System, dual-level LumiLight LED lighting, 5-speed ICON Touch® controls and ACT™.

Size: 36", 42" CFM: 600, 390, 290



MODENA WALL (ZMO)

Resembling a floating canopy made of steel and glass, Modena houses dual-level LumiLight LED lighting and 5-speed ICON Touch® controls within its one-inch stainless steel canopy. Available with ACT™.

Size: 30", 36" CFM: 600, 390, 290

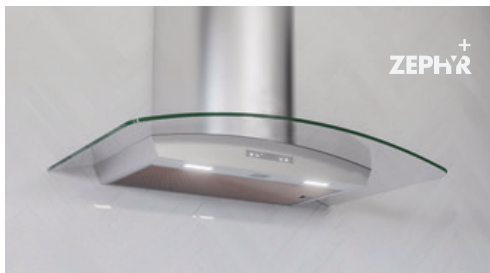
WALL



LUCÉ WALL (ZLU)

Boasting an elegant slice of sleek stainless steel married with the subtle glamor of accent lighting in Cloud White, Deep Blue, and Amber, the Lucé is the (gorgeous) future of range hoods. Available with ACT™ technology.

Size: 30", 36" CFM: 600, 390, 290



MILANO WALL (ZMI)

Milano takes range hood design and performance to higher grounds with its Zephyr Connect compatibility and 700-CFM PowerWave™ blower. Featuring tri-level LumiLight LED lighting, proximity touch controls and available in clear glass and stainless steel canopies.

Size: 36" CFM: 700, 590, 390, 290

Compatible with Zephyr Connect App



ROMA WALL (ZRO)

This contemporary design is complemented with a 600-CFM blower that operates at an ultra-quiet single sone. The ICON Touch® controls and 5-speed levels offer added performance. Available with ACT™ technology.

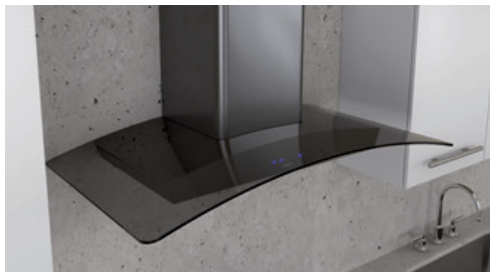
Size: 30", 36" CFM: 600, 390, 290



OMBRA WALL (ZOM)

Ombra is the perfect combination of form and function with its LumiLight LED lighting, capacitive touch controls and optional hybrid baffle filters. Ombra features a powerful 600 CFM blower with our exclusive Airflow Control Technology™ to meet local code requirements. Available in black stainless steel and stainless steel.

Size: 30", 36" CFM: 600, 390, 290



RAVENNA WALL (ZRV)

21st Century marries timeless beauty in this stunning hood, which features Clear and Smoke-Gray Glass canopy options, ACT™ and ICON Touch® controls. Available in stainless steel and black stainless.

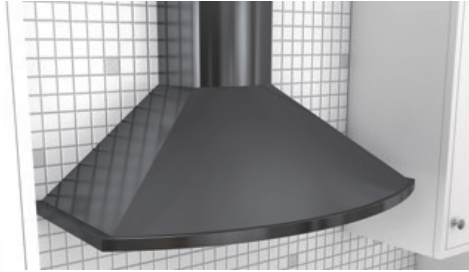
Size: 30", 36" CFM: 600, 390, 290



ROMA GROOVE WALL (ZRG)

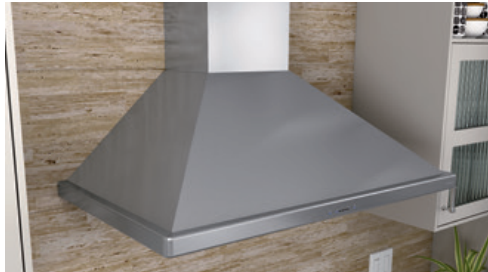
Tune into the new: the Roma Groove range hood is here to help you find your rhythm in the kitchen. Its built-in Bluetooth® stereo speakers make it easy to stream your favorite playlist whether you're entertaining or just hanging out with the family. And the beat goes on.

Size: 30", 36" CFM: 600, 390, 290



SAVONA WALL (ZSA)

A semi-circular surface accentuates this range hood's European design. Featuring our new BriteStrip™ LED lighting, a robust 685-CFM blower, 5-speed ICON Touch® controls, and our exclusive ACT™ technology. Available in black, white, stainless steel and black stainless. Size: 30", 36" CFM: 685, 390, 290



SIENA WALL (ZSI)

Packed with power, a 650-CFM blower, ACT™ technology and hybrid baffle filters make this hood perfect for any kitchen. Dual-level BriteStrip™ LED lighting and ICON Touch® controls make clearing the air as simple as the touch of a button. Size: 30", 36" CFM: 650, 390, 290



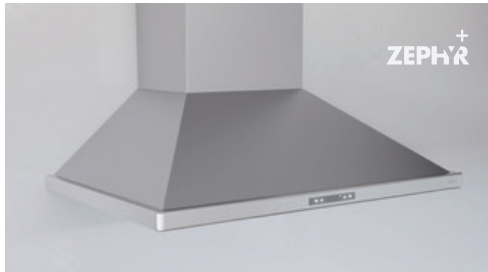
SIENA ES WALL (ZSI-ES)

The Siena ES, certified ENERGY STAR hood is packed with power. With a 400-CFM blower and ACT™ technology it has a versatile range of features that'll shine in any kitchen. Warm-white fluorescent lights and Zephyr's new ICON Touch® controls make clearing the air as simple as touching a button. Size: 30", 36" CFM: 400, 290



SIENA PRO WALL (ZSP)

With it's classic, professional-style design Siena Pro is equipped with a 1,200-CFM blower, hybrid baffle filters and Zephyr's ICON Touch® controls. Clean, efficient power is just a touch away. Available with ACT™ technology. Size: 36", 42", 48" CFM: 1,200, 590, 390



VENEZIA WALL (ZVE)

A classic modern design, Venezia's pyramid shape includes baffle filters, a 700-CFM PowerWave™ blower, and Zephyr Connect technology — elevating this timeless range hood to unparalleled levels of performance. Enhanced with tri-level, LumiLight LED lighting and an optional wireless remote control. Size: 30", 36", 42" CFM: 700, 590, 390, 290
Compatible with Zephyr Connect App



VERONA WALL (ZVO)

The Verona's straight-glass canopy also serves as an ambience setting LED display that rotates between Cloud White, Deep Blue, and Amber color options. Includes dual-level LumiLight LED lighting, 5-speed ICON Touch® controls and ACT™. Size: 30", 36" CFM: 600, 390, 290

UNDER-CABINET



BREEZE I UNDER-CABINET (AK11)

Its sophisticated features and performance set the industry standard for value. 3-speed mechanical controls and 250-CFM blower quietly clears the air while convenient dishwasher-safe aluminum filters remove airborne residues. Updated with dual-level LumiLight LED lighting. Available in black, white and stainless steel finishes. Size: 24", 30", 36" CFM: 250



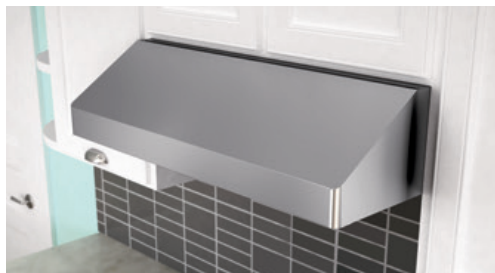
BREEZE II (AK12)

For superior value in a quiet, high-performance package, Breeze II comes equipped with 3-speed electronic controls, 400-CFM blower and updated LumiLight LED lighting. Available in black, white, stainless steel and black stainless finishes. Size 30", 36" CFM: 400



CYCLONE UNDER-CABINET (AK65)

Modern, clean lines provide a perfect complement to any interior, while centrifugal blowers liquefy cooking residue without complex filters to make clean up a snap. Featuring LumiLight LED lighting, and available in black, white, stainless steel and black stainless finishes. Size: 30", 36", 42" CFM: 600



GUST UNDER-CABINET (AK71)

A discreet, European-style, professional-looking range hood, Gust adds fashion and function to under-cabinet installations. Equipped with dual-level LumiLight LED lighting and baffle filters. Size: 30", 36" CFM: 400, 290



PISA UNDER-CABINET (ZPI)

Tucked neatly beneath your bridge cabinet, Pisa works quietly and beautifully out of sight. Adorned with a retractable visor, LumiLight LED lighting and powered by a 500-CFM or 290-CFM blower, Pisa's low-profile body delivers stunning design and quality performance. Available with a stainless steel or white handle. Size: 24", 30", 36" CFM: 500, 290



PYRAMID (ZPY)

Classic, architectural lines meet at an apex to energize the familiar look of the chimney style under-cabinet hood. This expressive-yet-utilitarian design is upgraded with our Perimeter Aspiration System for the ultimate fusion of style and performance. Dual-level LumiLight LED lights illuminate the surface below while the 12" depth ensures a true fit with popular cabinet styles. Size 30", 36" CFM: 400, 290



HURRICANE UNDER-CABINET (AK25)

High tech meets high style with an updated look and feel. 3-speed electronic touch controls take charge of the 695-CFM blowers and dual-level LumiLight LED lights. Available in black, white, and stainless steel finishes and with Airflow Control Technology (ACT™).
Size: 30", 36" CFM: 695, 390, 290



TYPHOON UNDER-CABINET (AK21)

One of our founding models, Typhoon is not only good looking but packed with powerful, virtually noise-free 850-CFM blowers. It includes a convenient self-cleaning system along with tri-level LumiLight LED lights. Available in black, white and stainless steel. Now with Quiet Speed Setting and ACT™.
Size: 30", 36", 42", 48" CFM: 850, 390, 290



INSERTS



MONSOON CONNECT INSERT (AK94)

This powerful, easy to clean hood insert features Zephyr Connect, our most advanced operation system, a Power-Wave™ blower, tri-level LumiLight LED lighting, professional baffle filters and a wireless remote control option. Size: 30", 36", 42", 48" CFM: 1,300, 700, 590, 390, 290
Compatible with Zephyr Connect App



MONSOON I INSERT (AK92)

A 19-1/4" depth one-piece liner that includes dual-level LumiLight LED's and an ADA compliant wireless remote control, pro baffle filters, multiple CFM options and 6-speed electronic controls. Available with ACT™. Size: 30", 36" CFM: 600, 390, 290
Size: 42", 48" CFM: 1,200, 590, 390



MONSOON MINI INSERT (AK91)

Good things come in small packages, and in this case, it's the Monsoon Mini one-piece liner. Includes dual-level LumiLight LED lighting, 3-speed mechanical slide controls and hybrid baffle filters. It's 300-CFM blower can accommodate both vertical and horizontal ducting. Size: 30", 36" CFM: 300



TORNADO I INSERT (AK81)

This 600-CFM insert features updated dual-level LumiLight LED lights, a 3-speed blower, hybrid baffle filters, and an angled housing for a better fit with any built-in canopy. An optional stainless steel liner extends and protects your cabinetry. Size 27" CFM: 600



TORNADO MINI INSERT (AK84)

Designed with cost-efficiency and versatility in mind, Tornado Mini's small footprint fits under a standard bridge cabinet — choose one of our optional adjustable-depth stainless steel liners to accommodate custom hood enclosures. Features dual-level LumiLight LED lights, an ultra-quiet blower, and a recirculating option. Size: 20" CFM: 400, 290



TWISTER INSERT (AK80)

The 3-speed Twister insert hides the ventilation you need beneath your custom, built-in canopy. An optional liner extends and beautifies the hood while protecting your cabinetry. Also features LumiLight LED lighting. Size 27" CFM: 400



MONSOON MINI II INSERT (AK95)

A quiet storm of air-clearing power in a designer package, the Monsoon Mini II gets the job done with features like 600 CFM blower, hybrid baffle filters, Airflow Control Technology (ACT™), and dual-level LumiLight LED lighting. Size 30", 36", 42", 48" CFM: 600, 390, 290



TORNADO GLO INSERT (AK85)

Ready for your kitchen's Glo-up? The Tornado Glo's Perimeter Aspiration System (PAS) is made of one large light panel to add a touch of gourmet glamor to your kitchen. This chic model keeps the air in your kitchen fresh while illuminating your space in soft light. Featuring Airflow Control Technology (ACT™).

Size 27" CFM: 600, 390, 290

DOWNDRAFT



SORRENTO DOWNDRAFT (DD1)

Ideal for small kitchens or island settings where ceilings are too high for ducting, Sorrento rises to the occasion as a downdraft hood option.

Size: 30", 36" CFM: 500



TWISTER ES INSERT (AK80-ES)

The 3-speed 290-CFM Twister ES hides the ventilation you need beneath your custom, built-in canopy. An optional stainless steel liner extends the hood and protects your cabinetry. ENERGY STAR approved with warm white fluorescent lighting.

Size: 27" CFM: 290



VORTEX INSERT (AK90)

The Vortex one-piece liner leads the way with the industry's only adjustable-depth installation. Vortex is designed to extend up to 3 inches towards the front of the custom hood canopy so you can install it in spaces up to 20-1/2" deep. Add to this its category-leading 390 CFM, LumiLight LED lighting, optional recirculating kit and its 36-inch mounting height maximum.

Size 30", 36" CFM: 390

PRO COLLECTION

Power, Performance, Size—the sleek, powerful, muscular products in the Pro Collection go above and beyond simple ventilation technology. The hoods in the Pro Collection have been developed for the most discerning of tastes when nothing but the best, the biggest and the most impressive will do.





ISLAND



TITAN ISLAND (AK77)

Featuring PowerWave™ blower technology, Titan island challenges the definition of pro-style hoods with its impressive size, powerful 750-CFM blower – with the option to achieve 1,300 CFM – and stunning good looks. Featuring LED lighting, pro baffle filters, and Airflow Control Technology (ACT™).

Size: 36", 42", 48" CFM: 1,300, 750, 590, 390, 290

WALL



ROMA PRO WALL (ZRP)

Roma Pro redefines the meaning of pro-style hood with its remarkable size, powerful 750-CFM blower, and contemporary shape. Featuring PowerWave™ blower technology with the option to achieve 1,300 CFM, LED lighting, pro baffle filters, and Airflow Control Technology (ACT™).

Size: 36", 48" CFM: 1,300, 750, 590, 390, 290



TEMPEST II WALL (AK75)

Designed with professional-grade performance and seamless contours, Tempest II gives you serious cooking power with 650-CFM or 1,200-CFM blower options.

Equipped with dishwasher-safe, high-airflow pro baffle filters, 6-speeds, dual-level LumiLight LED lighting, and an optional wireless remote control.

Size: 30", 36", 42", 48", 54" CFM: 1,200, 650, 390, 290



TITAN WALL (AK76)

Featuring PowerWave™ blower technology, Titan includes a 750-CFM blower with the option to combine two blowers together to achieve 1,300 CFM. The ultimate workhorse in the kitchen, Titan features LED lighting, pro baffle filters, and ACT™ technology.

Size: 36", 42", 48", 54", 60" CFM: 1,300, 750, 590, 390, 290



TIDAL II WALL (AK74)

Designed for the ultimate pro-style kitchen, Tidal II wall hood features optional dual 1300-CFM PowerWave™ blowers, Zephyr Connect capabilities, and professional baffle filters. Equipped with tri-level LumiLight LED lighting and 6-Speed Proximity Touch Controls.

Size: 30", 36", 48" CFM: 1,300, 700, 590, 390, 290

Compatible with Zephyr Connect App

UNDER-CABINET



TEMPEST I UNDER-CABINET (AK70)

A streamlined under-cabinet pro-style range hood, Tempest I combines power, efficiency and flexibility. 650-CFM or 1,200-CFM blower options, dual-level LumiLight LED lighting and high-airflow pro baffle filters ensure a lifetime of exceptional performance. Available with ACT™ and an optional wireless remote control. Size: 30", 36", 42", 48" CFM: 1,200, 650, 390, 290



TIDAL I UNDER-CABINET (AK73)

Tidal I under-cabinet, pro-style hood is the next wave of the future with its optional dual 1300-CFM Power-Wave™ blowers and Zephyr Connect capabilities. Featuring professional baffle filters, tri-level LumiLight LED lighting and 6-Speed Proximity Touch Controls. Size: 30", 36" CFM: 1,300, 700, 590, 390, 290

Compatible with Zephyr Connect App

INSERTS



MONSOON II INSERT (AK93)

Now available with LumiLight LED lighting and our exclusive Airflow Control Technology (ACT™), Monsoon II delivers and then more. It is a great option for custom cabinetry or enclosure with its 22-1/2" body depth. Equipped with professional baffle filters, 6-speed electronic controls and a wireless remote control. Size: 36", 42", 48", 54" CFM: 1,200, 590, 390



TORNADO II INSERT (AK82)

Tornado II will complement any kitchen's style. Choose the ventilation level that's right for you along with an optional, easy-to-install, stainless steel, adjustable-depth liner for more flexible installations. A stylish and discreet wireless remote puts you in control while tri-level LumiLight LED lighting illuminates the surface below. Size 29" CFM: 1,000



TORNADO III INSERT (AK83)

Tornado III takes the typical power pack up a notch, with multiple blower options to meet the most demanding chef's requirements. 3-speed electronic controls put you in command of either a 290-, 600- or 1,000-CFM blower. Tri-level LumiLight LED lights illuminate the surface below while the stylish wireless remote puts you in command from up to 15 feet away. Optional stainless steel liners are available in 48", 54" and 60" sizes. Size 38" CFM: 1,000, 600, 290

OUTDOOR



SPRUCE ONE-PIECE LINER (AK98)

The Spruce 22-1/2" deep outdoor insert can be installed in wall or island applications and includes 304-grade stainless steel with powerful 1,200 CFM internal blowers. Featuring 3-speed metallic knob controls and directional halogen lighting with pro baffle filters that enhance airflow.

Size: 36", 42", 48", 60" CFM: 1,200



CYPRESS WALL (AK78)

Cypress features a 304-grade stainless steel body, 3-speed metallic knob controls, dual-level halogen lighting and an extended 32" depth for more capture. Optional 12" fixed duct cover and telescopic duct cover for 10-12' ceilings available.

Size: 36", 42", 48", 54" CFM: 1,200





DESIGN & EXPERIENCE CENTER

To learn more about making a statement in your home with a Zephyr range hood or Presrv™ Wine & Beverage Cooler, visit us at zephyronline.com to locate a dealer near you.

Or come visit our one-of-a-kind Design & Experience Center, a luxury showroom, in the heart of San Francisco's vibrant Design District. Our display area is the largest of its kind in North America and offers you more than 7,000 square feet of new kitchen discoveries.

2277 Alameda Street
at Potrero
San Francisco, CA
94103

zephyronline.com/design-and-experience-center





CONTACT US

1.888.880.8368

zephyronline.com

DESIGN & EXPERIENCE CENTER

2277 Alameda Street

San Francisco, CA 94103



Zephyr Kitchen Experience App

Don't just imagine your dream kitchen with a Zephyr range hood or Presrv™ Wine & Beverage Cooler—see it with our Augmented Reality App. Inspiring kitchen design and innovation, one Zephyr product at a time.

Download it today!

